

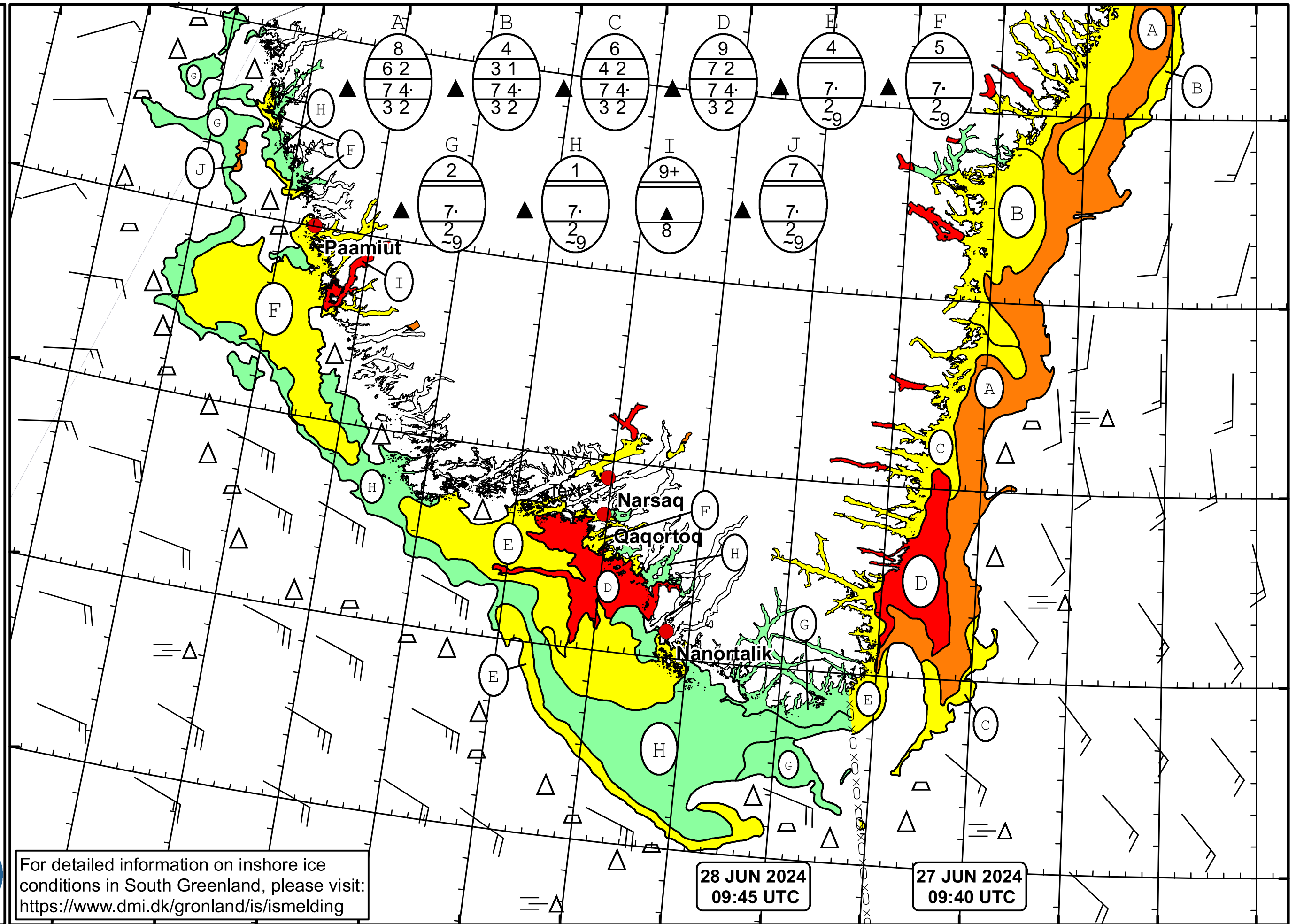


53°W 52°W 51°W 50°W 49°W 48°W 47°W 46°W 45°W 44°W 43°W 42°W 41°W 40°W 39°W


  
 DMI
   

  
 Ice Service
   
 Cape Farewell Ice Chart
   
 Danish Meteorological Institute
   
 Valid: 28 June 2024, 09:45 UTC
   
 Next Chart: 29 June 2024



For detailed information on inshore ice conditions in South Greenland, please visit: <https://www.dmi.dk/gronland/is/ismelding>

28 JUN 2024  
 09:45 UTC

27 JUN 2024  
 09:40 UTC

51°W 50°W 49°W 48°W 47°W 46°W 45°W 44°W 43°W 42°W 41°W 40°W 39°W