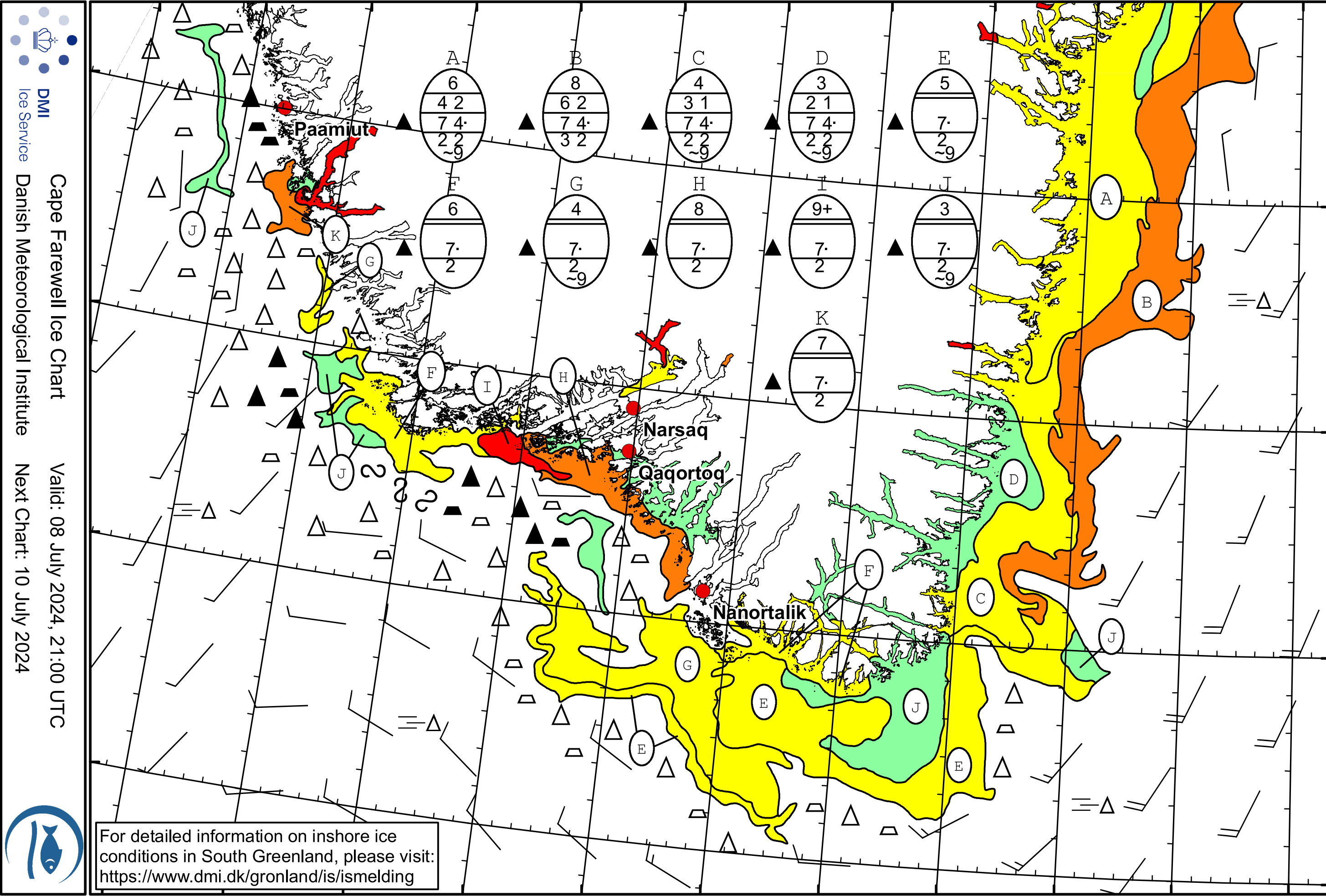



51°W 50°W 49°W 48°W 47°W 46°W 45°W 44°W 43°W 42°W 41°W 40°W



 **DMI**  
 Ice Service  
 Danish Meteorological Institute  
 Cape Farewell Ice Chart  
 Valid: 08 July 2024, 21:00 UTC  
 Next Chart: 10 July 2024

For detailed information on inshore ice conditions in South Greenland, please visit:  
<https://www.dmi.dk/gronland/is/ismelding>



50°W 49°W 48°W 47°W 46°W 45°W 44°W 43°W 42°W 41°W 40°W

62°N  
61°N  
60°N  
59°N