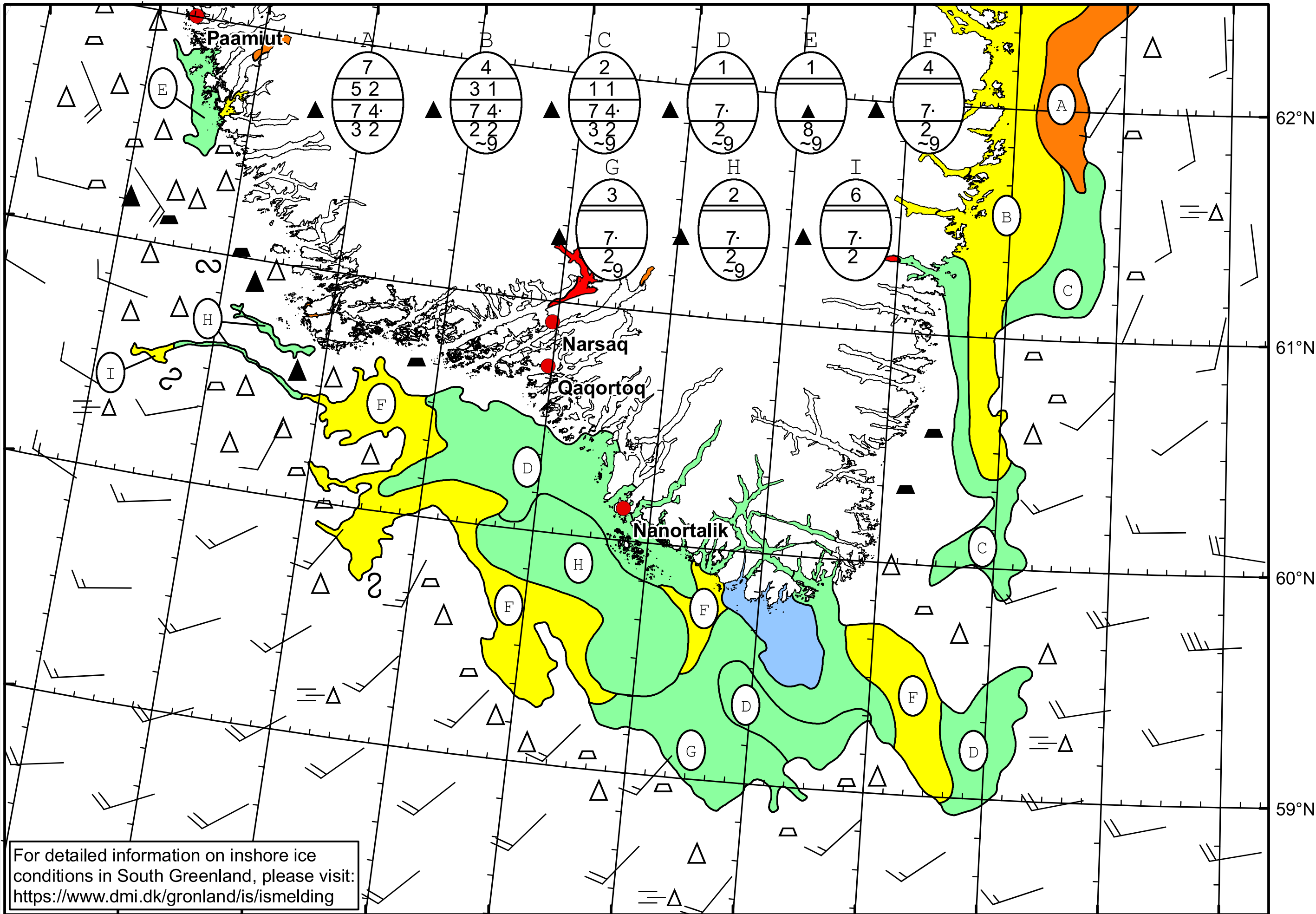


51°W 50°W 49°W 48°W 47°W 46°W 45°W 44°W 43°W 42°W 41°W 40°W



DMi
Ice Service
Danish Meteorological Institute
Cape Farewell Ice Chart
Valid: 12 July 2024, 20:30 UTC
Next Chart: 14 July 2024



For detailed information on inshore ice conditions in South Greenland, please visit:
<https://www.dmi.dk/gronland/is/ismelding>

49°W 48°W 47°W 46°W 45°W 44°W 43°W 42°W 41°W 40°W