

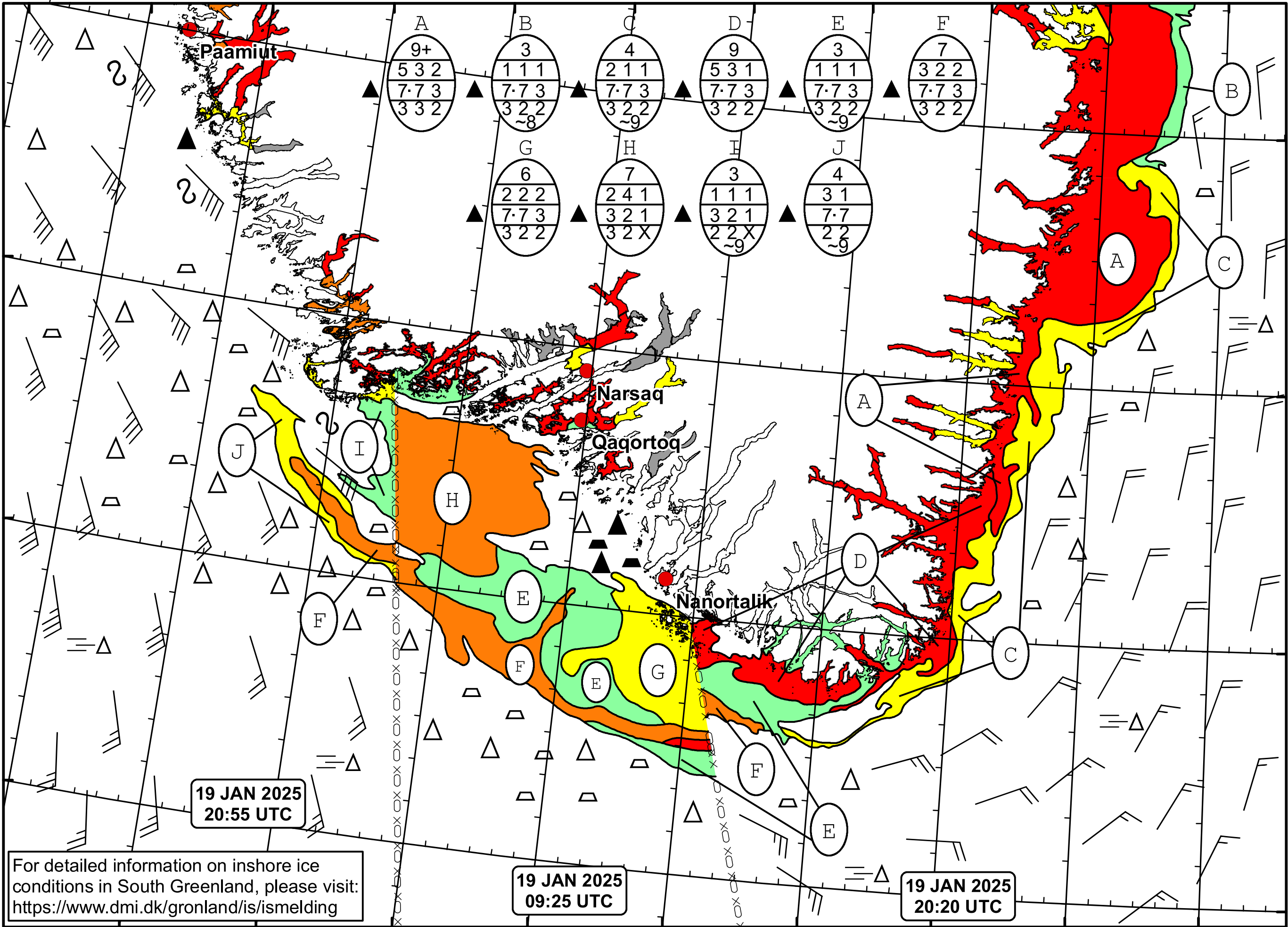
51°W 50°W 49°W 48°W 47°W 46°W 45°W 44°W 43°W 42°W 41°W



DMI  
Ice Service  
Danish Meteorological Institute

Cape Farewell Ice Chart

Valid: 19 January 2025, 20:20 UTC  
Next Chart: 22 January 2024



19 JAN 2025  
20:55 UTC

19 JAN 2025  
09:25 UTC

19 JAN 2025  
20:20 UTC

For detailed information on inshore ice conditions in South Greenland, please visit:  
<https://www.dmi.dk/gronland/is/ismelding>

49°W 48°W 47°W 46°W 45°W 44°W 43°W 42°W 41°W

62°N

61°N

60°N

59°N