

51°W 50°W 49°W 48°W 47°W 46°W 45°W 44°W 43°W 42°W 41°W

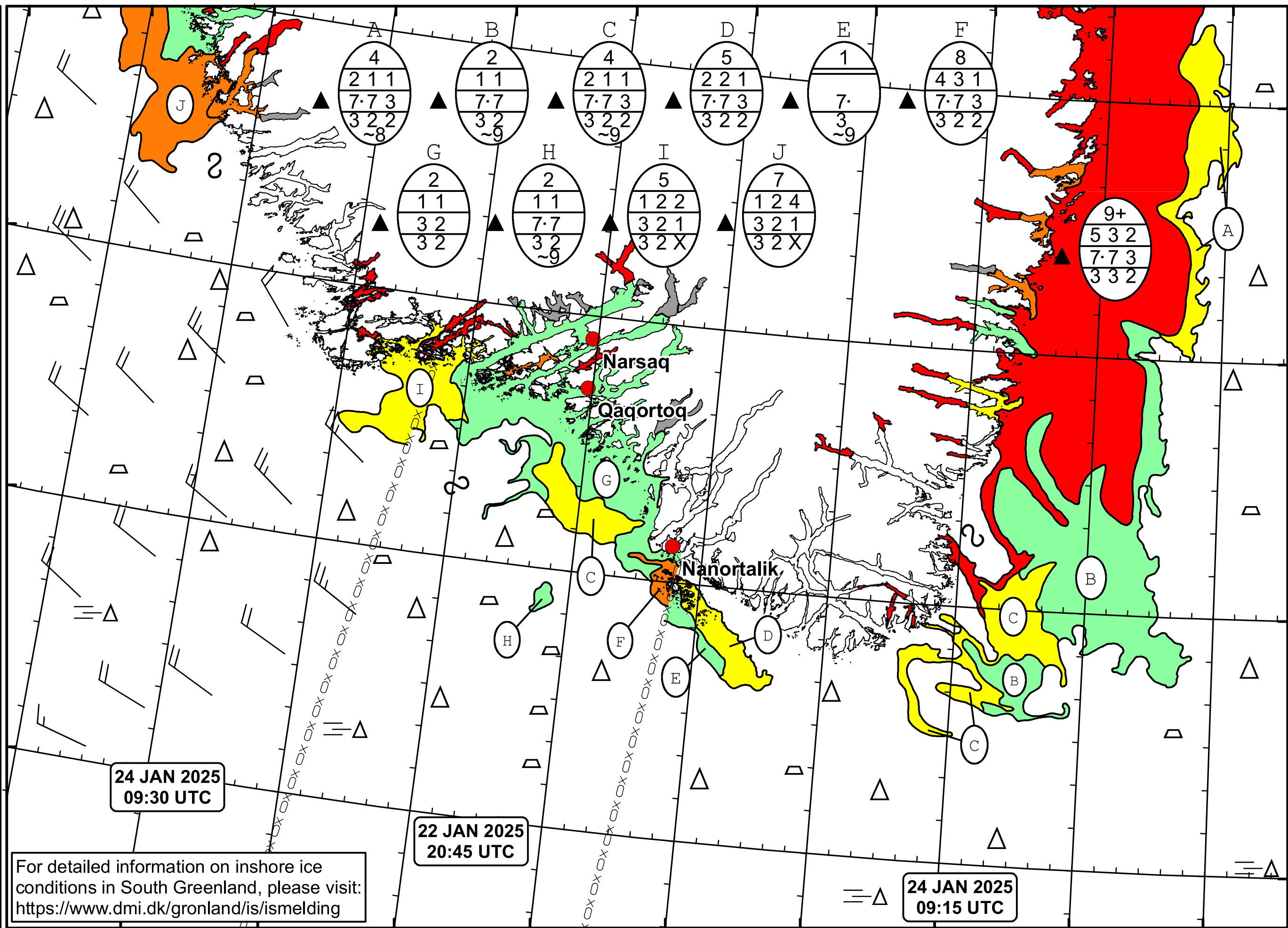


DMI

Ice Service

Cape Farewell Ice Chart
Danish Meteorological Institute

Valid: 24 January 2025, 09:30 UTC
Next Chart: 25 January 2024



24 JAN 2025
09:30 UTC

22 JAN 2025
20:45 UTC

24 JAN 2025
09:15 UTC

For detailed information on inshore ice conditions in South Greenland, please visit:
<https://www.dmi.dk/gronland/is/ismelding>

49°W 48°W 47°W 46°W 45°W 44°W 43°W 42°W 41°W

62°N

61°N

60°N

59°N