

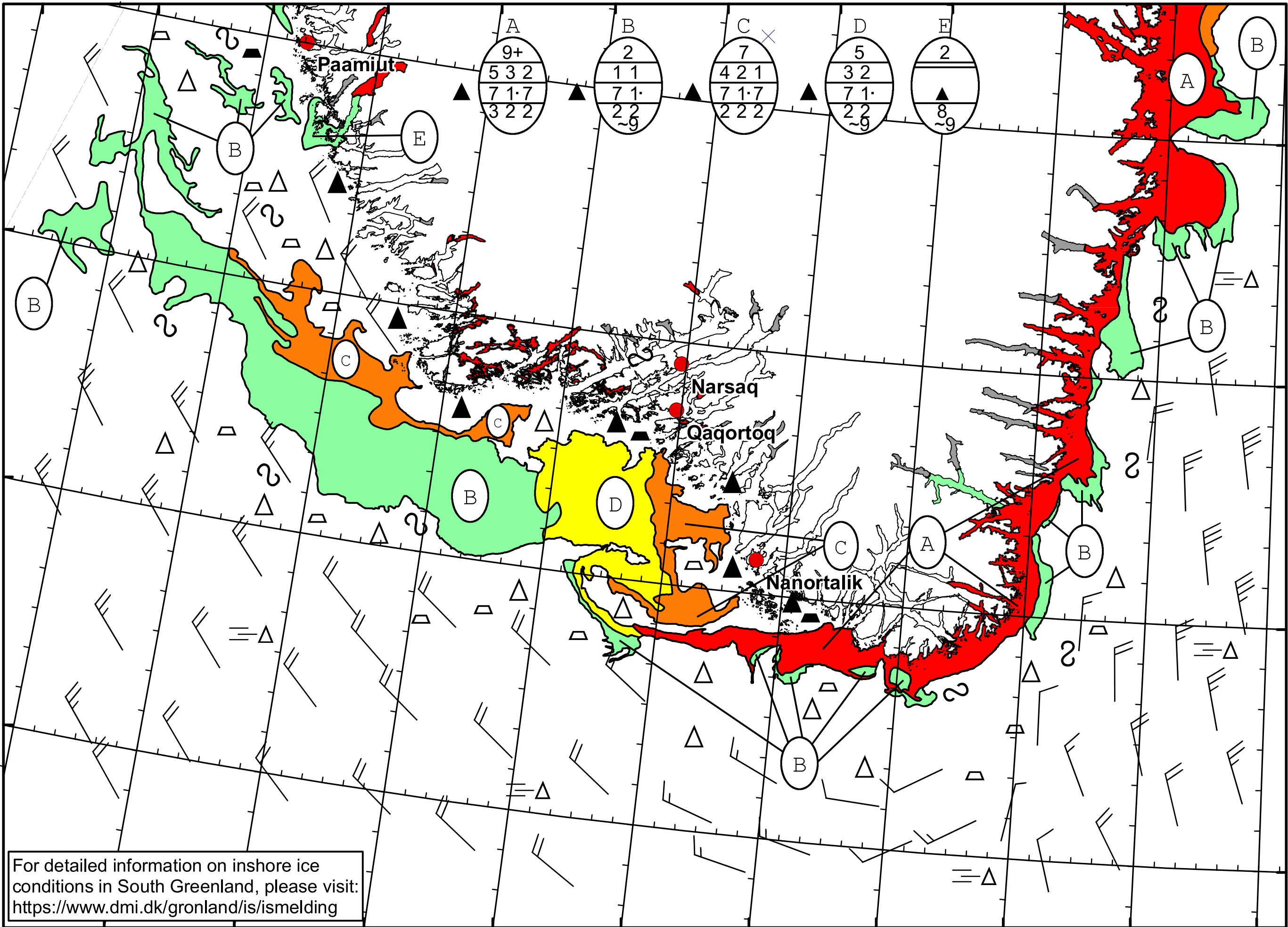
52°W 51°W 50°W 49°W 48°W 47°W 46°W 45°W 44°W 43°W 42°W



DMI
Ice Service

Cape Farewell Ice Chart
Danish Meteorological Institute

Valid: 21 February 2025, 20:55 UTC
Next Chart: 22 February 2025



For detailed information on inshore ice conditions in South Greenland, please visit:
<https://www.dmi.dk/gronland/is/ismelding>

50°W 49°W 48°W 47°W 46°W 45°W 44°W 43°W 42°W 41°W

62°N

61°N

60°N

59°N