



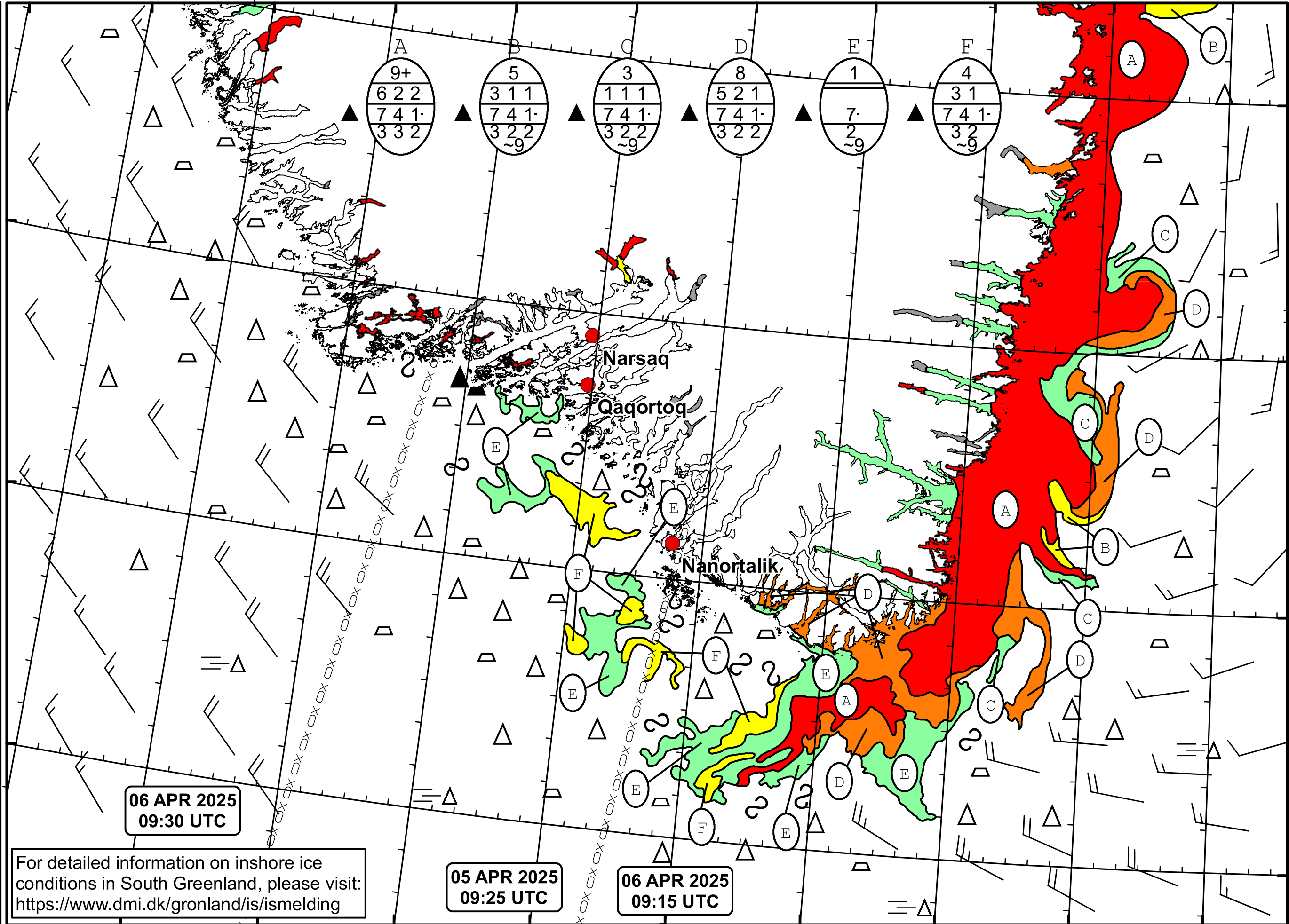
DMI  
Ice Service

Cape Farewell Ice Chart  
Danish Meteorological Institute

Valid: 06 April 2025, 09:15 UTC  
Next Chart: 07 April 2025



51°W 50°W 49°W 48°W 47°W 46°W 45°W 44°W 43°W 42°W 41°W



06 APR 2025  
09:30 UTC

05 APR 2025  
09:25 UTC

06 APR 2025  
09:15 UTC

For detailed information on inshore ice conditions in South Greenland, please visit:  
<https://www.dmi.dk/gronland/is/ismelding>

49°W 48°W 47°W 46°W 45°W 44°W 43°W 42°W 41°W

62°N  
61°N  
60°N  
59°N