

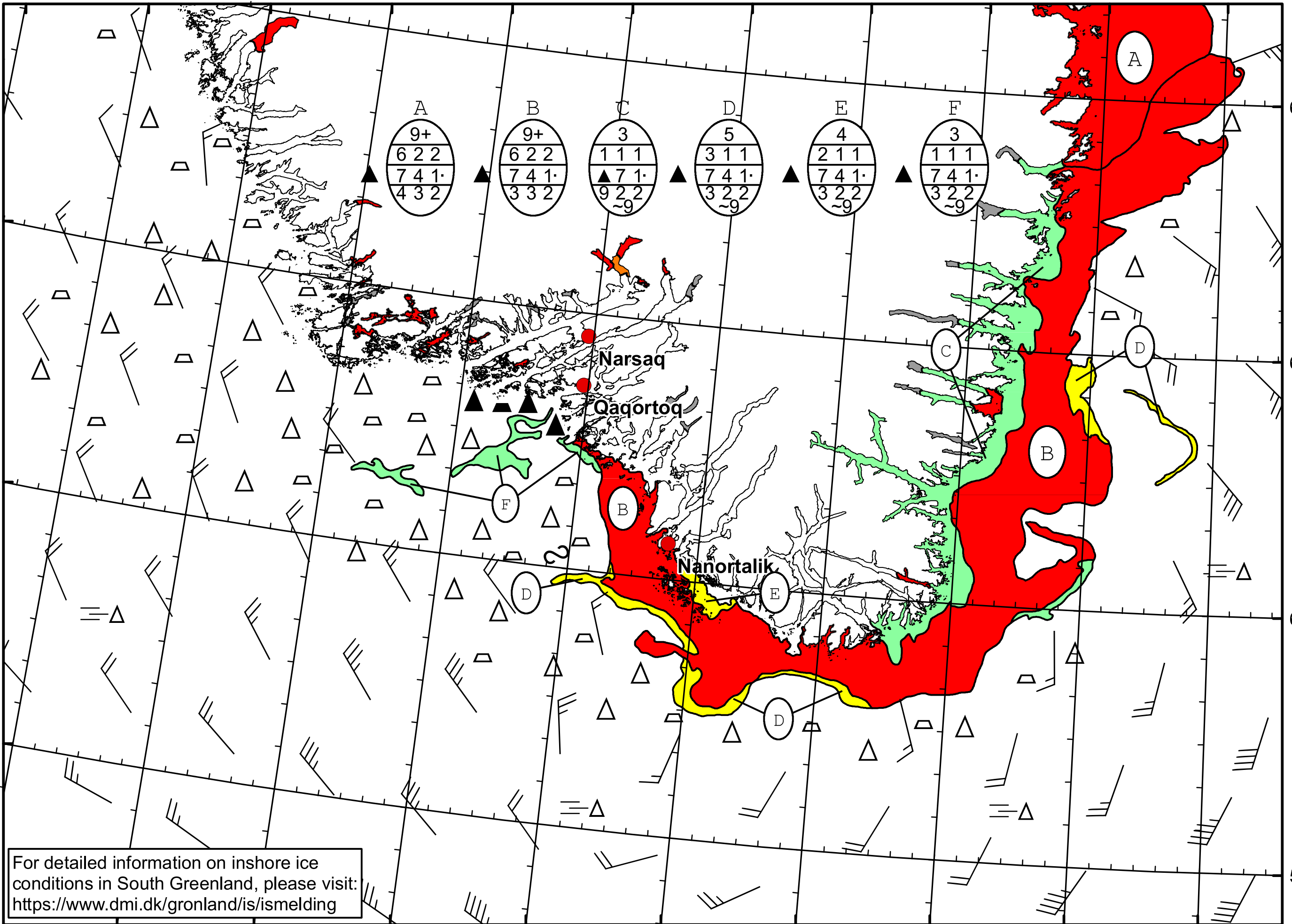
51°W 50°W 49°W 48°W 47°W 46°W 45°W 44°W 43°W 42°W 41°W



DMI
Ice Service

Cape Farewell Ice Chart
Danish Meteorological Institute

Valid: 11 April 2025, 09:20 UTC
Next Chart: 12 January 2025



For detailed information on inshore ice conditions in South Greenland, please visit: <https://www.dmi.dk/gronland/is/ismelding>

49°W 48°W 47°W 46°W 45°W 44°W 43°W 42°W 41°W

62°N
61°N
60°N
59°N