

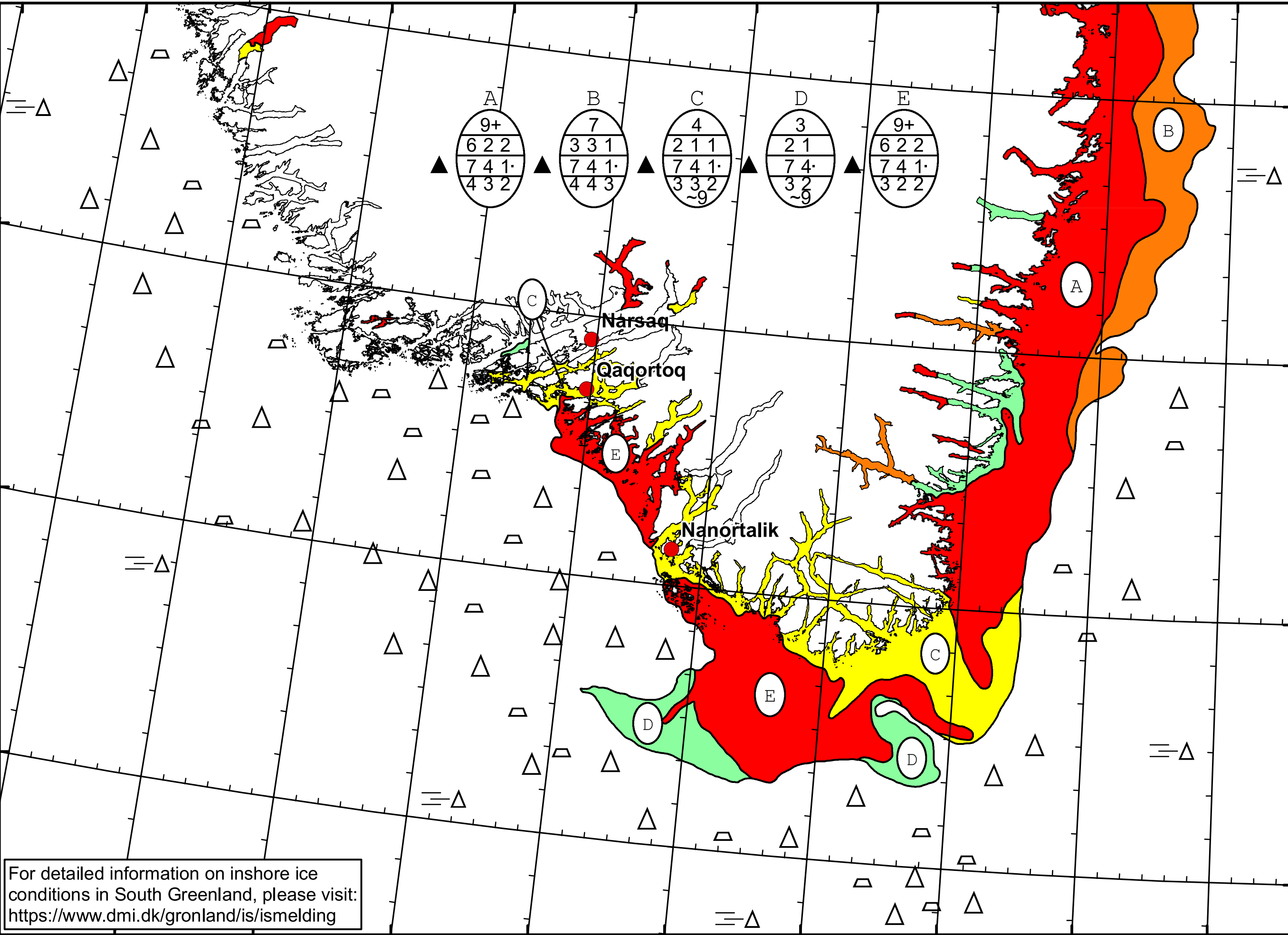
51°W 50°W 49°W 48°W 47°W 46°W 45°W 44°W 43°W 42°W 41°W



DMI
Ice Service

Cape Farewell Ice Chart
Danish Meteorological Institute

Valid: 11 May 2026, 09:30 UTC
Next Chart: 12 May 2026



A	B	C	D	E
9+	7	4	3	9+
6 2 2	3 3 1	2 1 1	2 1	6 2 2
7 4 1	7 4 1	7 4 1	7 4	7 4 1
4 3 2	4 4 3	3 3 2	3 2	3 2 2
		~9	~9	

For detailed information on inshore ice conditions in South Greenland, please visit:
<https://www.dmi.dk/gronland/is/ismelding>

49°W 48°W 47°W 46°W 45°W 44°W 43°W 42°W 41°W

62°N

61°N

60°N

59°N