

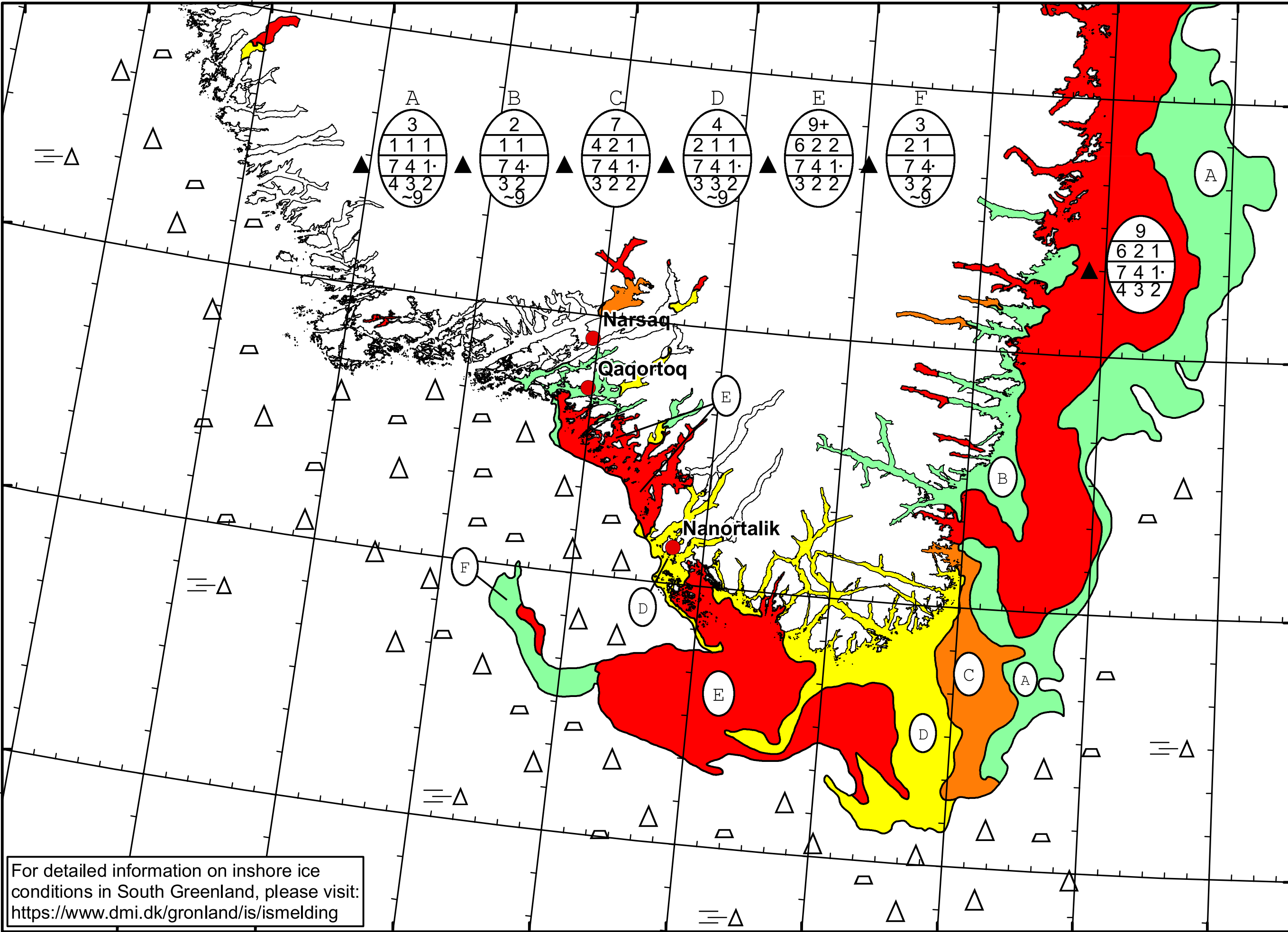
51°W 50°W 49°W 48°W 47°W 46°W 45°W 44°W 43°W 42°W 41°W



DMI  
Ice Service

Cape Farewell Ice Chart  
Danish Meteorological Institute

Valid: 12 May 2026, 09:20 UTC  
Next Chart: 13 May 2026



For detailed information on inshore ice conditions in South Greenland, please visit: <https://www.dmi.dk/gronland/is/ismelding>

49°W 48°W 47°W 46°W 45°W 44°W 43°W 42°W 41°W

62°N

61°N

60°N

59°N