

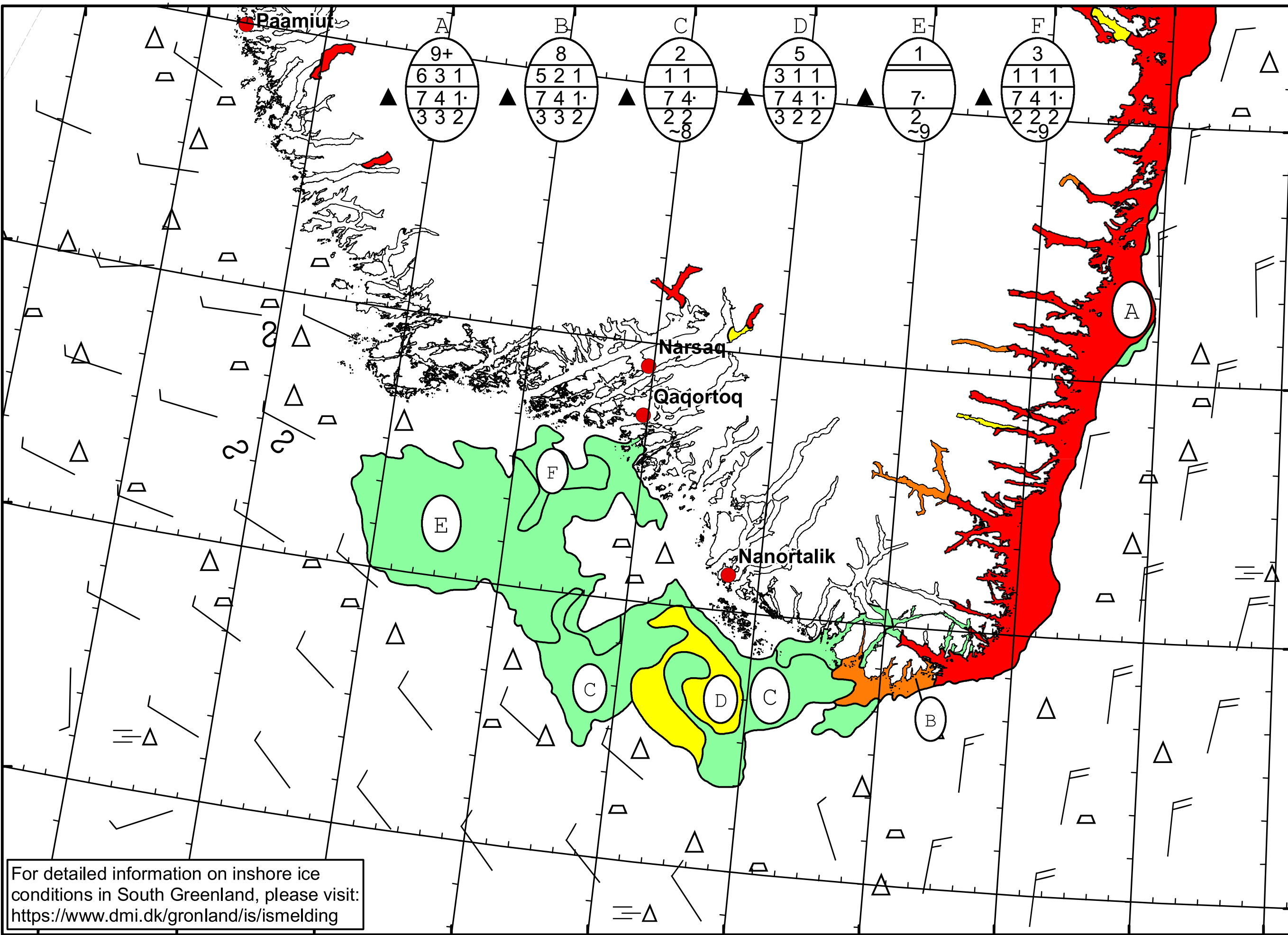
51°W 50°W 49°W 48°W 47°W 46°W 45°W 44°W 43°W 42°W



DMI  
Ice Service

Cape Farewell Ice Chart  
Danish Meteorological Institute

Valid: 31 May 2026, 20:35 UTC  
Next Chart: 03 June 2026



62°N  
61°N  
60°N  
59°N

For detailed information on inshore ice conditions in South Greenland, please visit:  
<https://www.dmi.dk/gronland/is/ismelding>

50°W 49°W 48°W 47°W 46°W 45°W 44°W 43°W 42°W 41°W