

58°W 57°W 56°W 55°W 54°W 53°W 52°W 51°W

71°N

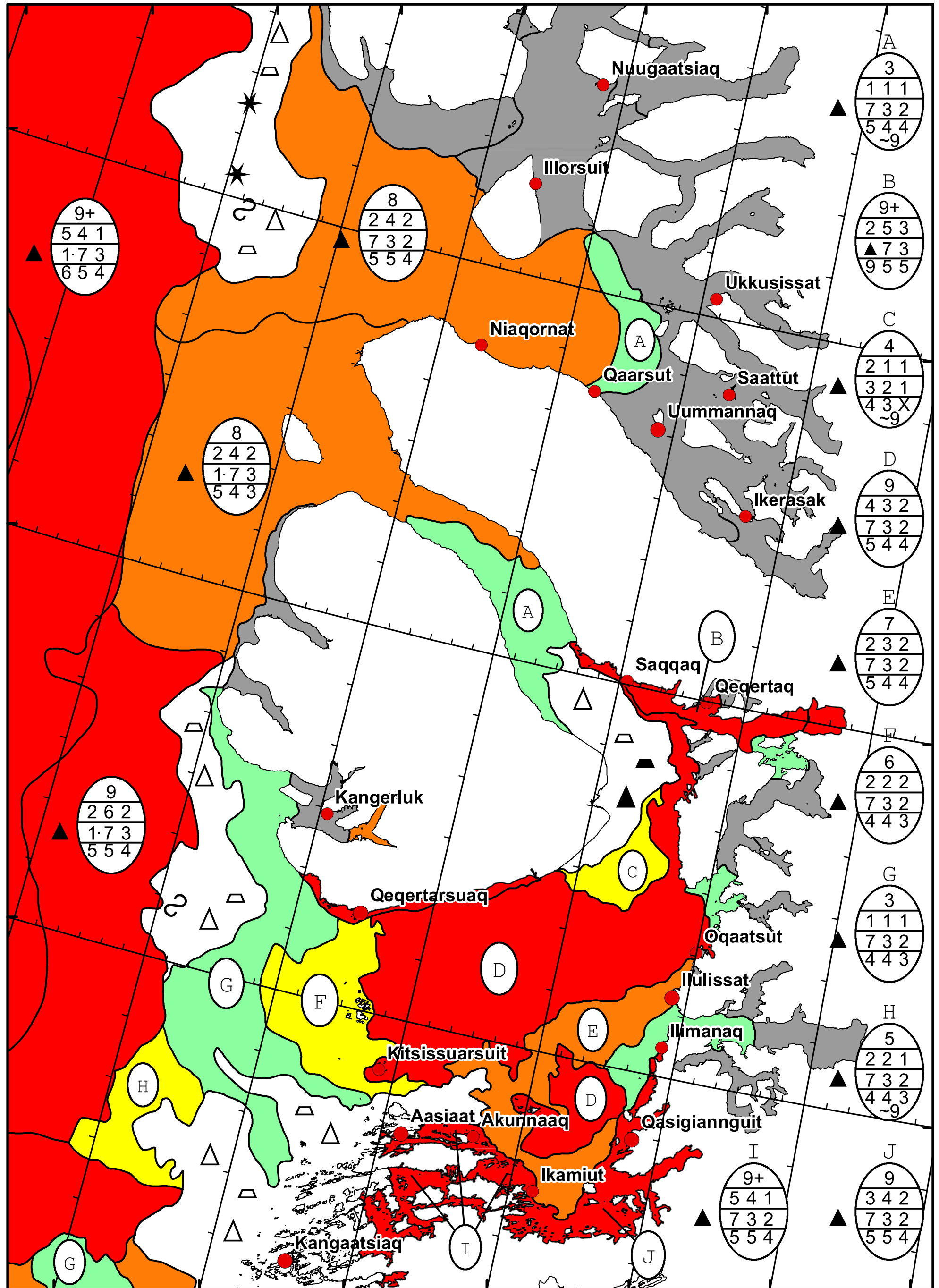
70°N

69°N

71°N

70°N

69°N



9+
5 4 1
1·7 3
6 5 4

8
2 4 2
7 3 2
5 5 4

8
2 4 2
1·7 3
5 4 3

9
2 6 2
1·7 3
5 5 4

3
1 1 1
7 3 2
5 4 4
~9

9+
2 5 3
▲ 7 3
9 5 5

4
2 1 1
3 2 1
4 3 X
~9

9
4 3 2
7 3 2
5 4 4

7
2 3 2
7 3 2
5 4 4

6
2 2 2
7 3 2
4 4 3

3
1 1 1
7 3 2
4 4 3

5
2 2 1
7 3 2
4 4 3
~9

9+
5 4 1
7 3 2
5 5 4

9
3 4 2
7 3 2
5 5 4



DMI
Ice Service

West Greenland Ice Chart

Danish Meteorological Institute

Valid: 10 April 2026, 20:55 UTC

