

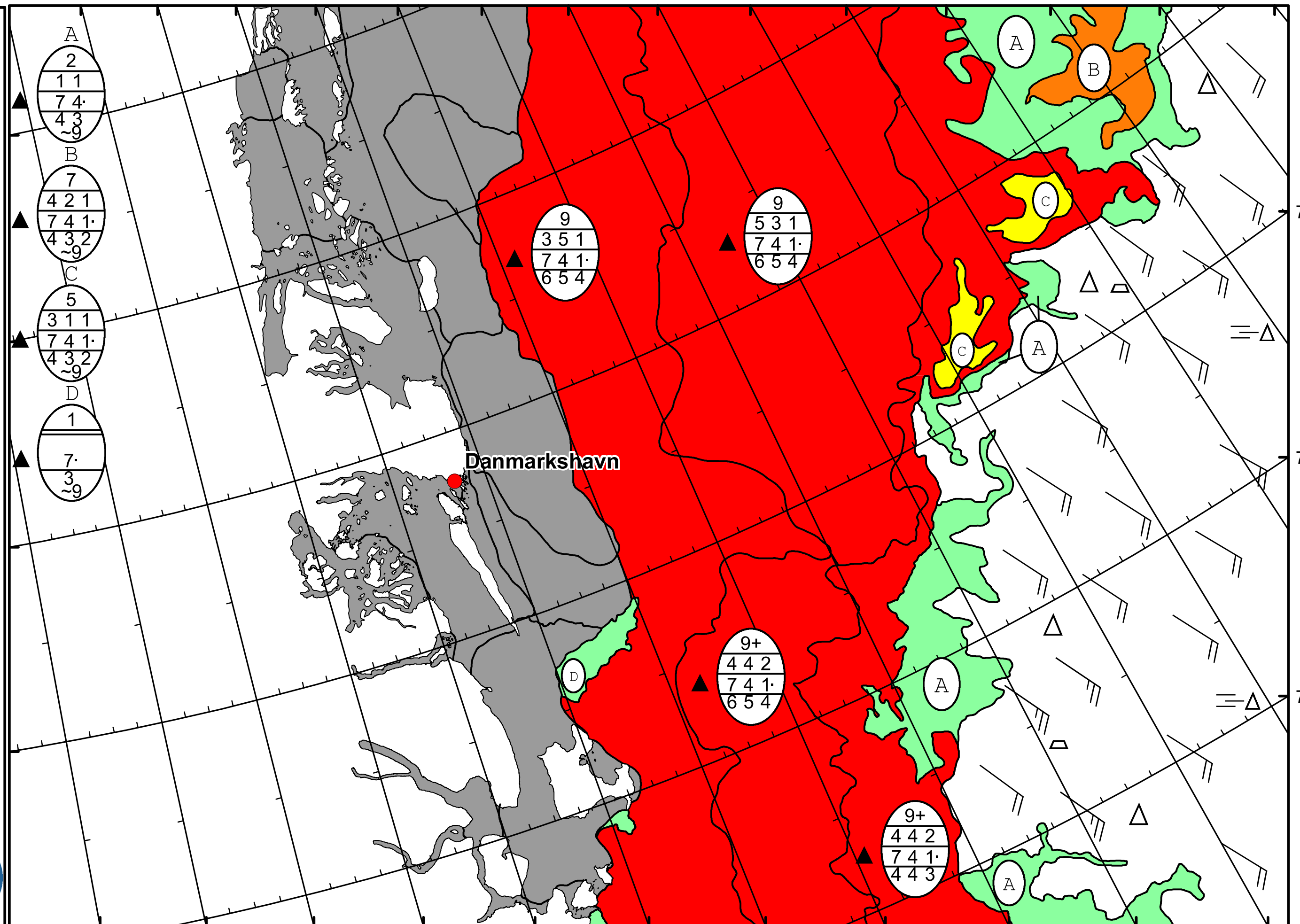


24°W 22°W 20°W 18°W 16°W 14°W 12°W 10°W 8°W 6°W 4°W 2°W 0° 2°E


  
 DMI
   

  
 Ice Service
   
 Danish Meteorological Institute
   
 East Greenland Ice Chart
   
 Valid: 06 May 2024, 17:55 UTC



A

2
1 1
7 4
4 3
~9

B

7
4 2 1
7 4 1
4 3 2
~9

C

5
3 1 1
7 4 1
4 3 2
~9

D

1
7
3
~9

9

3 5 1
7 4 1
6 5 4

9

5 3 1
7 4 1
6 5 4

9+

4 4 2
7 4 1
6 5 4

9+

4 4 2
7 4 1
4 4 3

28°W 26°W 24°W 22°W 20°W 18°W 16°W 14°W 12°W 10°W 8°W

76°N

75°N

74°N

Danmarkshavn