

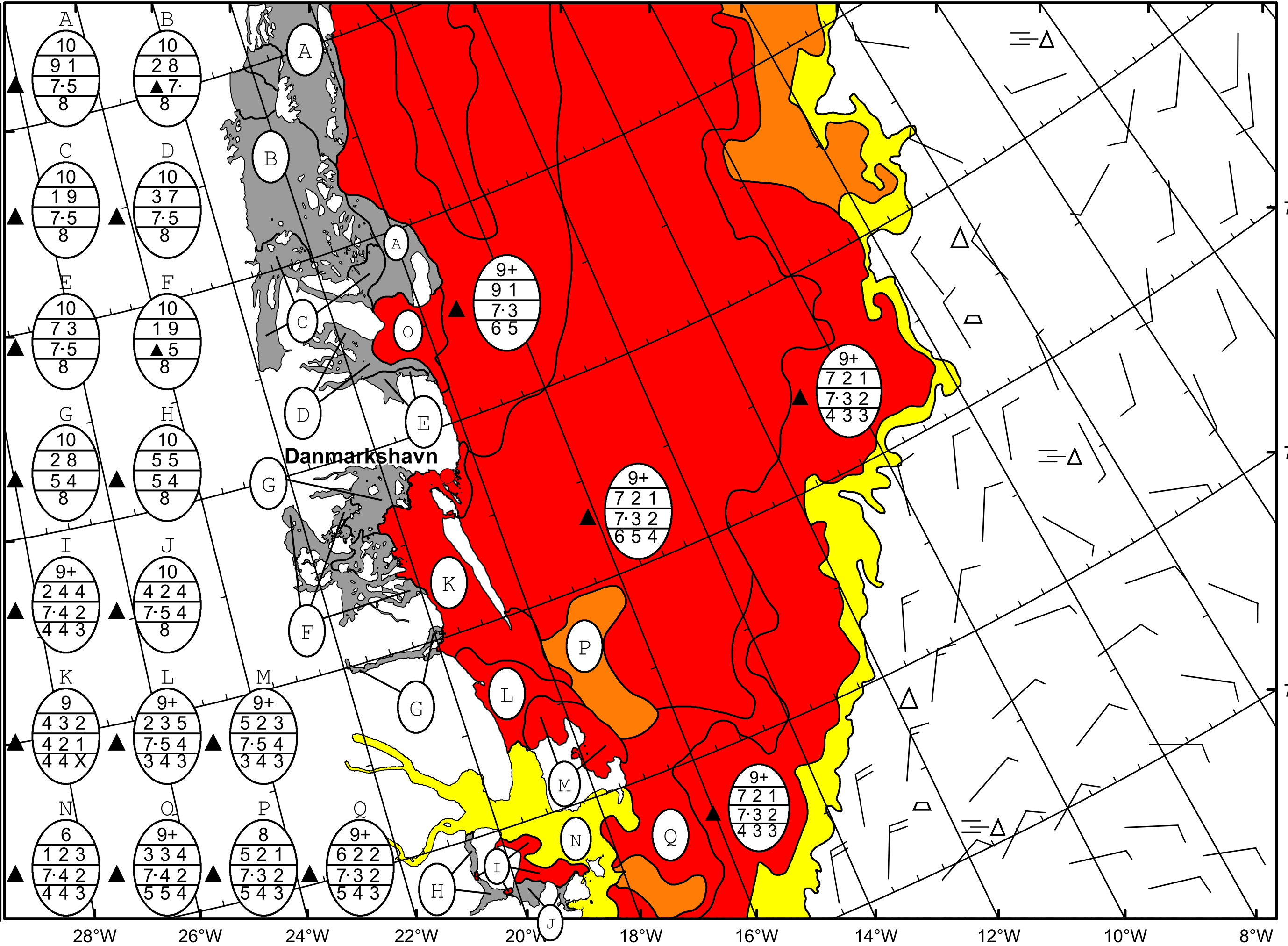
24°W 22°W 20°W 18°W 16°W 14°W 12°W 10°W 8°W 6°W 4°W 2°W 0° 2°E



DMI
Ice Service

East Greenland Ice Chart
Danish Meteorological Institute

Valid: 21 October 2024, 08:10 UTC



28°W 26°W 24°W 22°W 20°W 18°W 16°W 14°W 12°W 10°W 8°W

76°N

75°N

74°N