

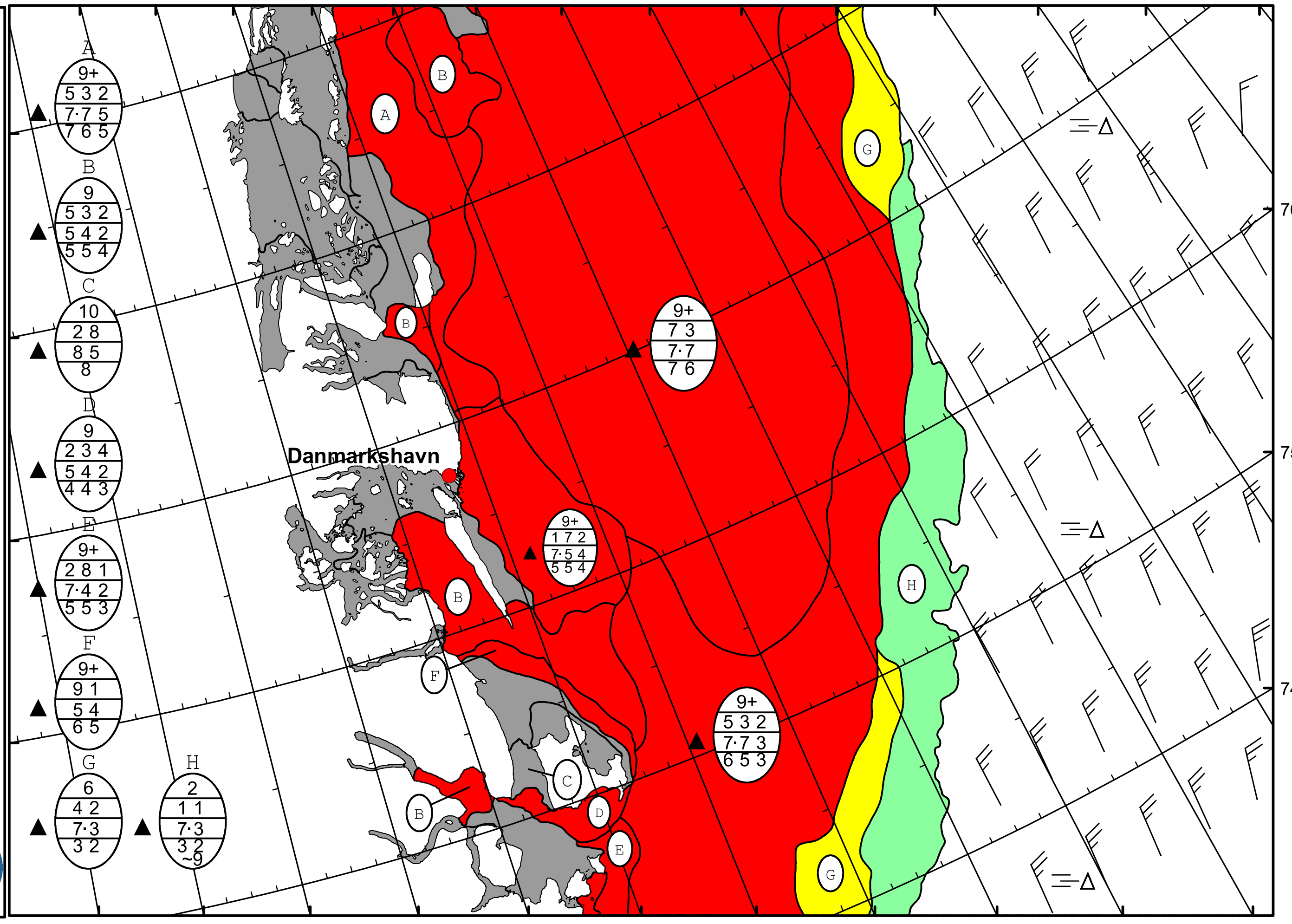
24°W 22°W 20°W 18°W 16°W 14°W 12°W 10°W 8°W 6°W 4°W 2°W 0° 2°E



DMI  
Ice Service  
Danish Meteorological Institute

East Greenland Ice Chart

Valid: 19 November 2024, 08:20 UTC



28°W 26°W 24°W 22°W 20°W 18°W 16°W 14°W 12°W 10°W 8°W

76°N  
75°N  
74°N