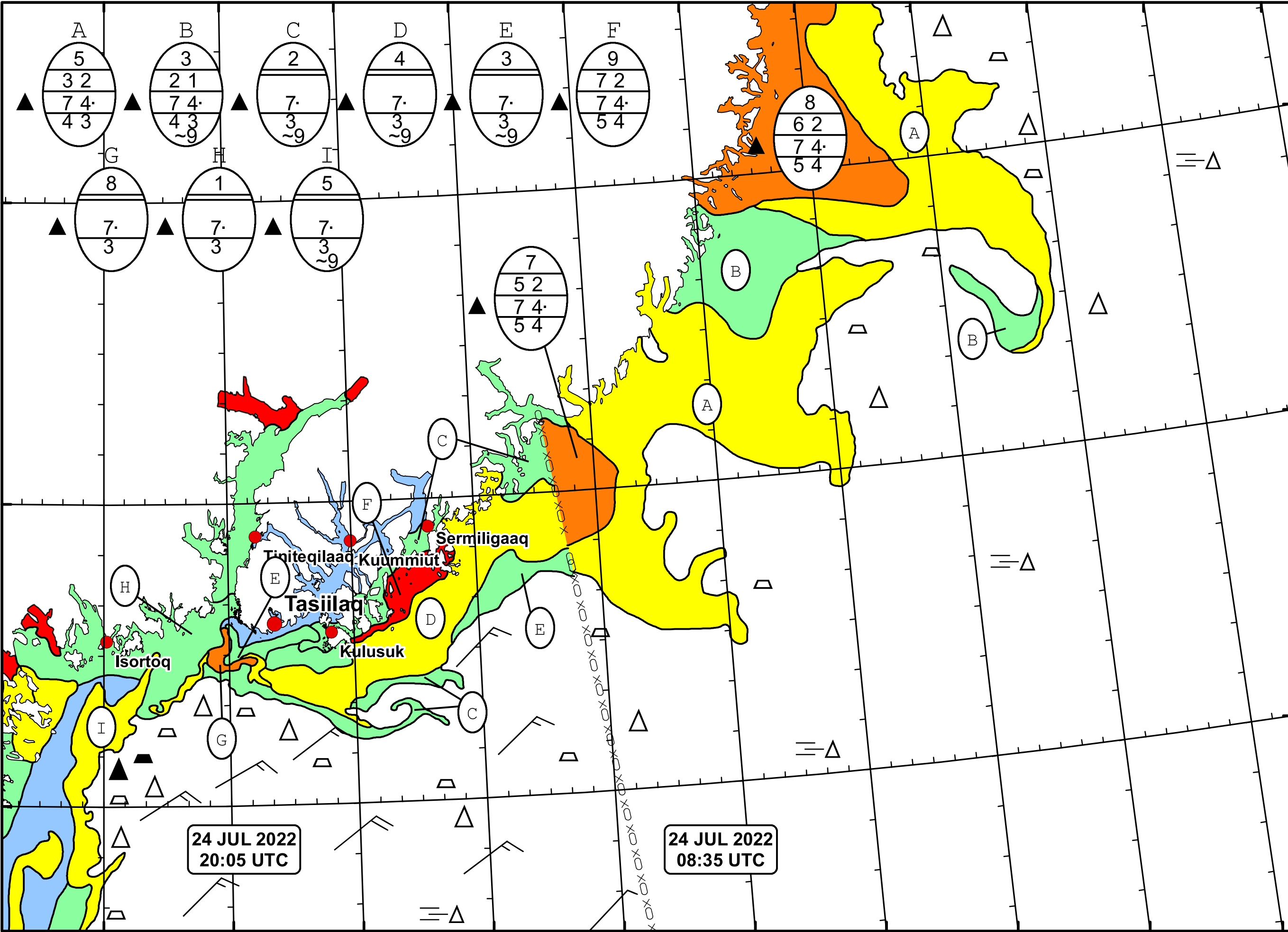



39°W 38°W 37°W 36°W 35°W 34°W 33°W 32°W 31°W 30°W 29°W






 DMI

 Ice Service

 East Greenland Ice Chart

 Danish Meteorological Institute

 Valid: 24 July 2022, 20:05 UTC



39°W 38°W 37°W 36°W 35°W 34°W 33°W 32°W 31°W 30°W

67°N

66°N

65°N