


39°W 38°W 37°W 36°W 35°W 34°W 33°W 32°W 31°W 30°W 29°W




 DMI

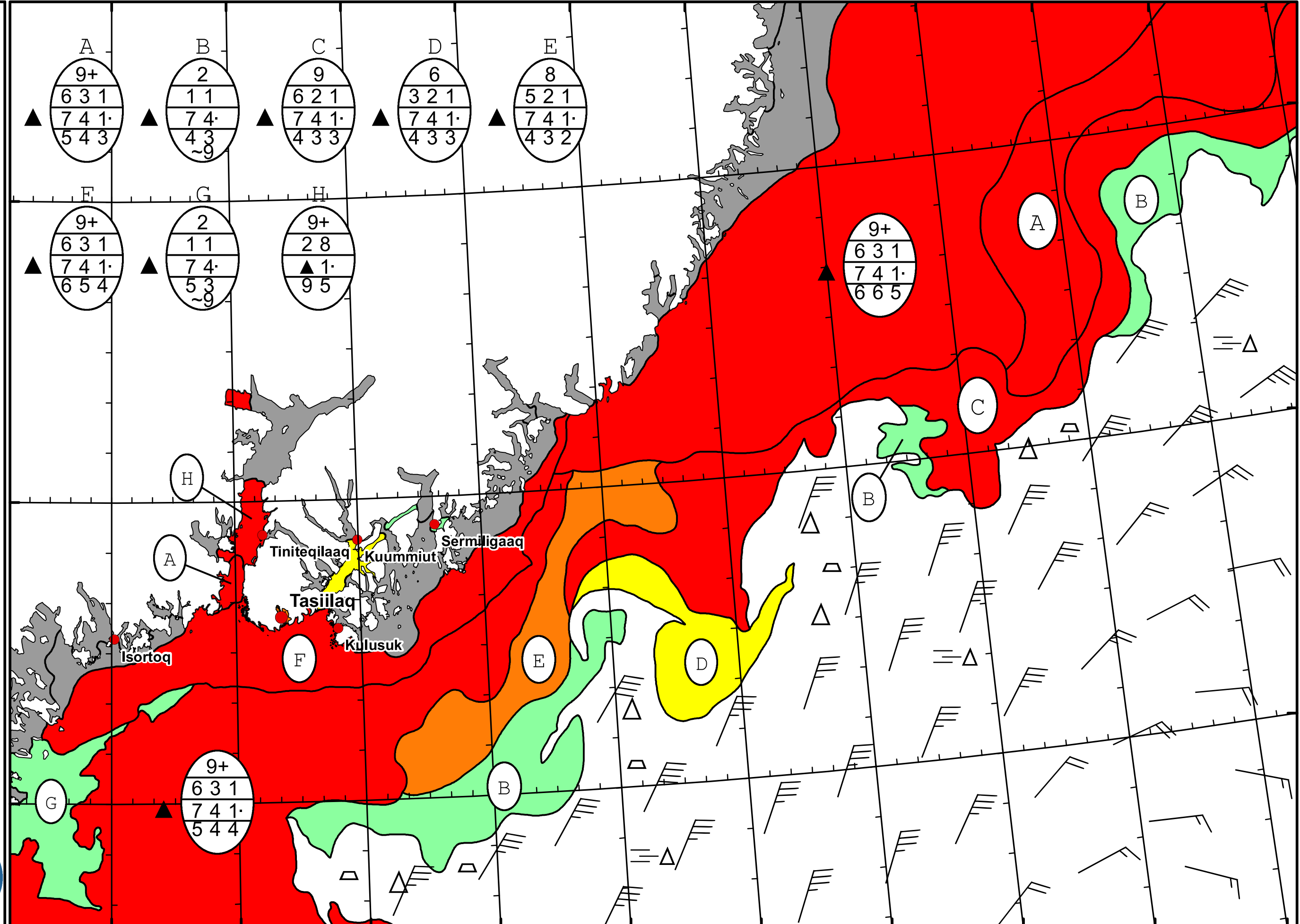
 Ice Service

 Danish Meteorological Institute

 East Greenland Ice Chart

 Valid: 24 May 2024, 09:05 UTC





67°N
66°N
65°N

39°W 38°W 37°W 36°W 35°W 34°W 33°W 32°W 31°W 30°W

Isortoq
Tasilaq
Kulusuk
Tiniteqilaq
Kuummiut
Sermiligaaq