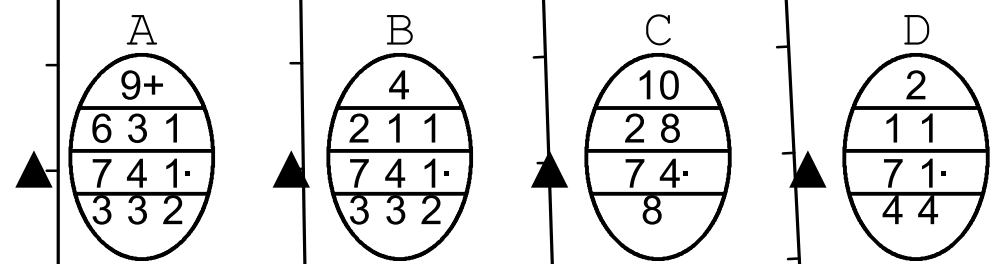



39°W 38°W 37°W 36°W 35°W 34°W 33°W 32°W 31°W 30°W 29°W






 DMI

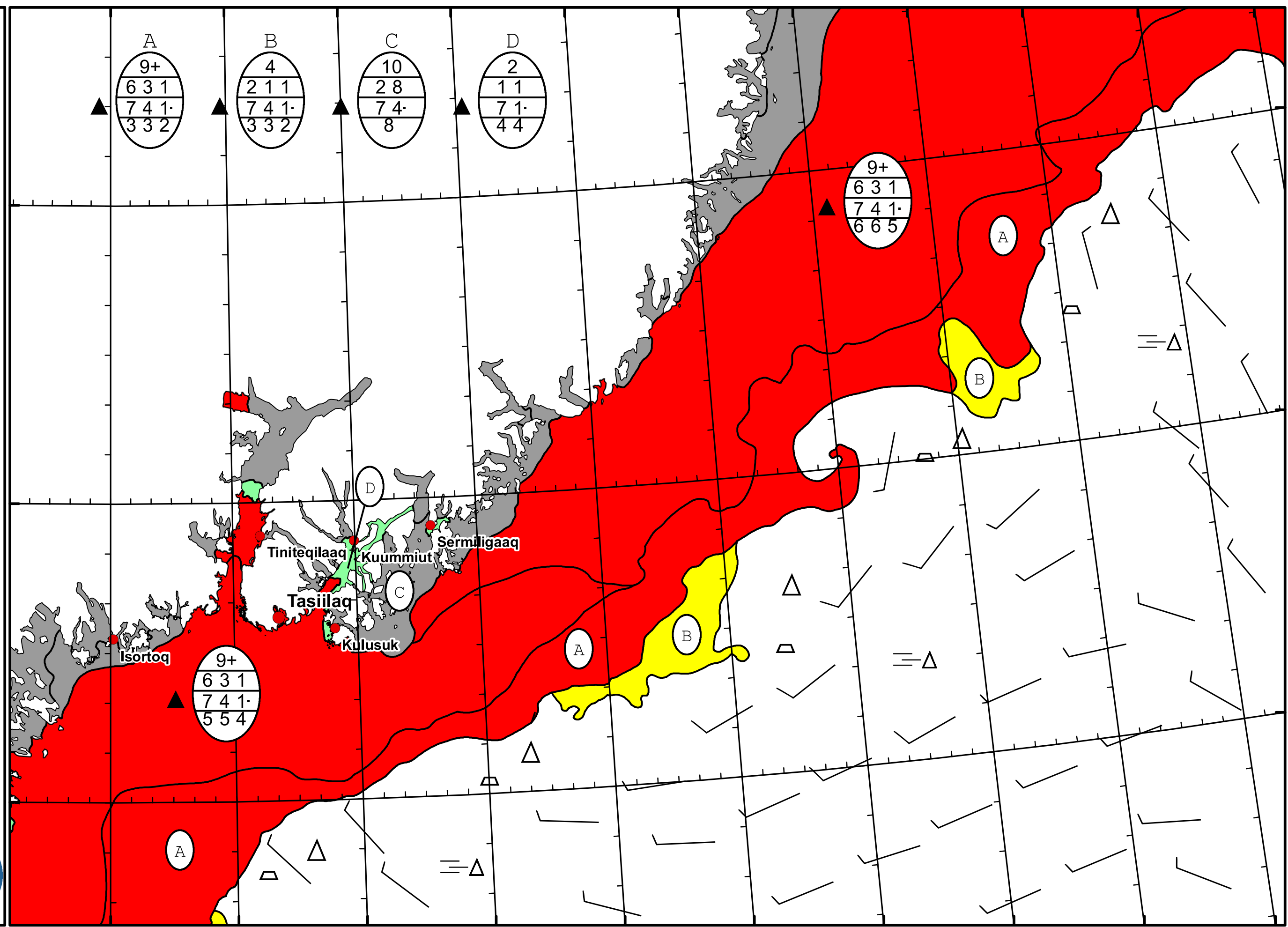
 Ice Service

 Danish Meteorological Institute

 East Greenland Ice Chart

 Valid: 27 May 2024, 19:45 UTC





39°W 38°W 37°W 36°W 35°W 34°W 33°W 32°W 31°W 30°W

67°N
66°N
65°N

Isortoq

Tasiilaq

Kulusuk

Tiniteqilaq / Kuummiut

Sermiligaaq