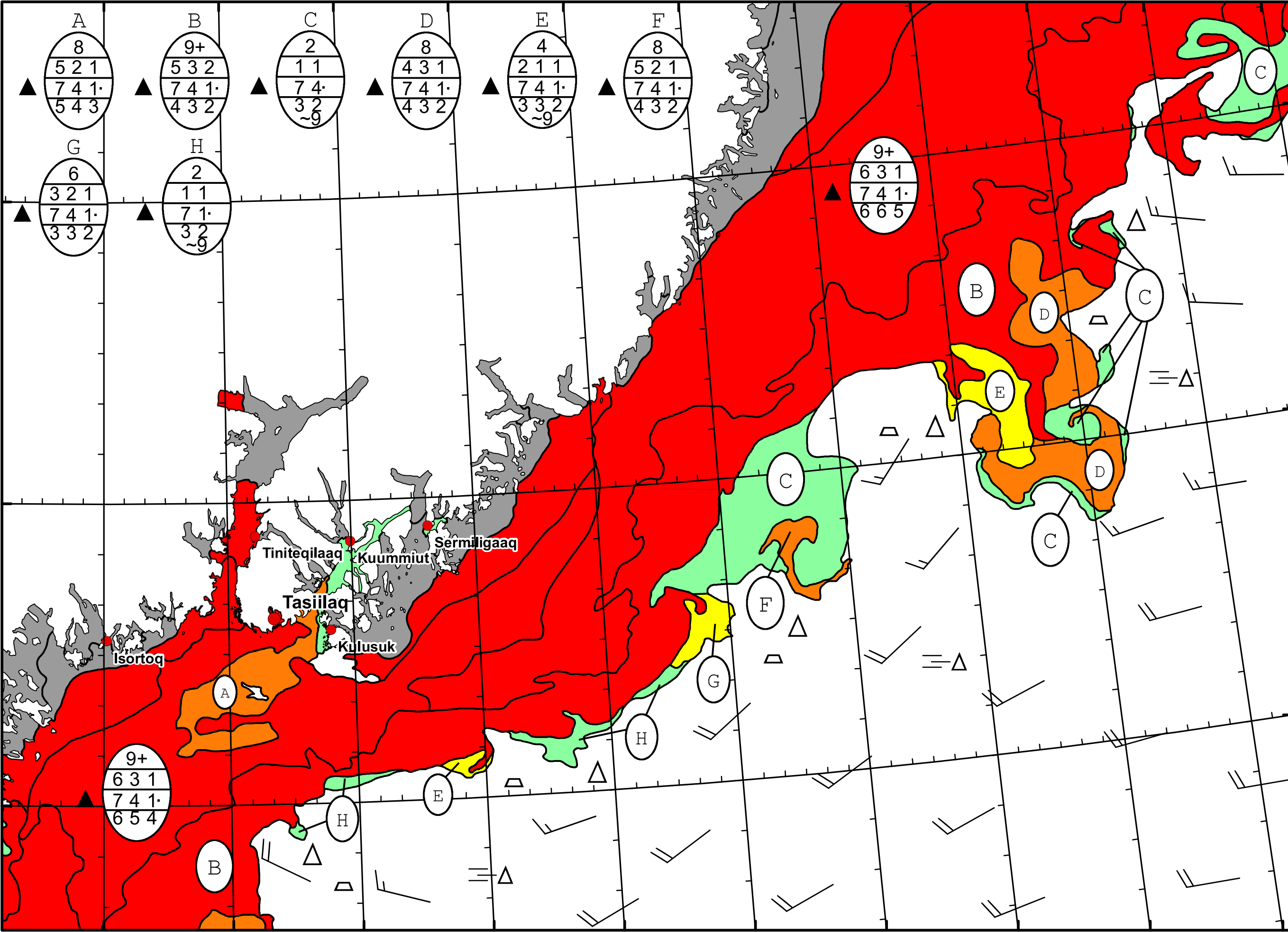



39°W 38°W 37°W 36°W 35°W 34°W 33°W 32°W 31°W 30°W 29°W





 DMI

 Ice Service

 Danish Meteorological Institute

 East Greenland Ice Chart

 Valid: 30 May 2024, 08:00 UTC

39°W 38°W 37°W 36°W 35°W 34°W 33°W 32°W 31°W 30°W

67°N
66°N
65°N

Tiniteqilaq
 Kuummiut
 Sermiligaaq
 Tasilaq
 Kulusuk
 Isortoq

