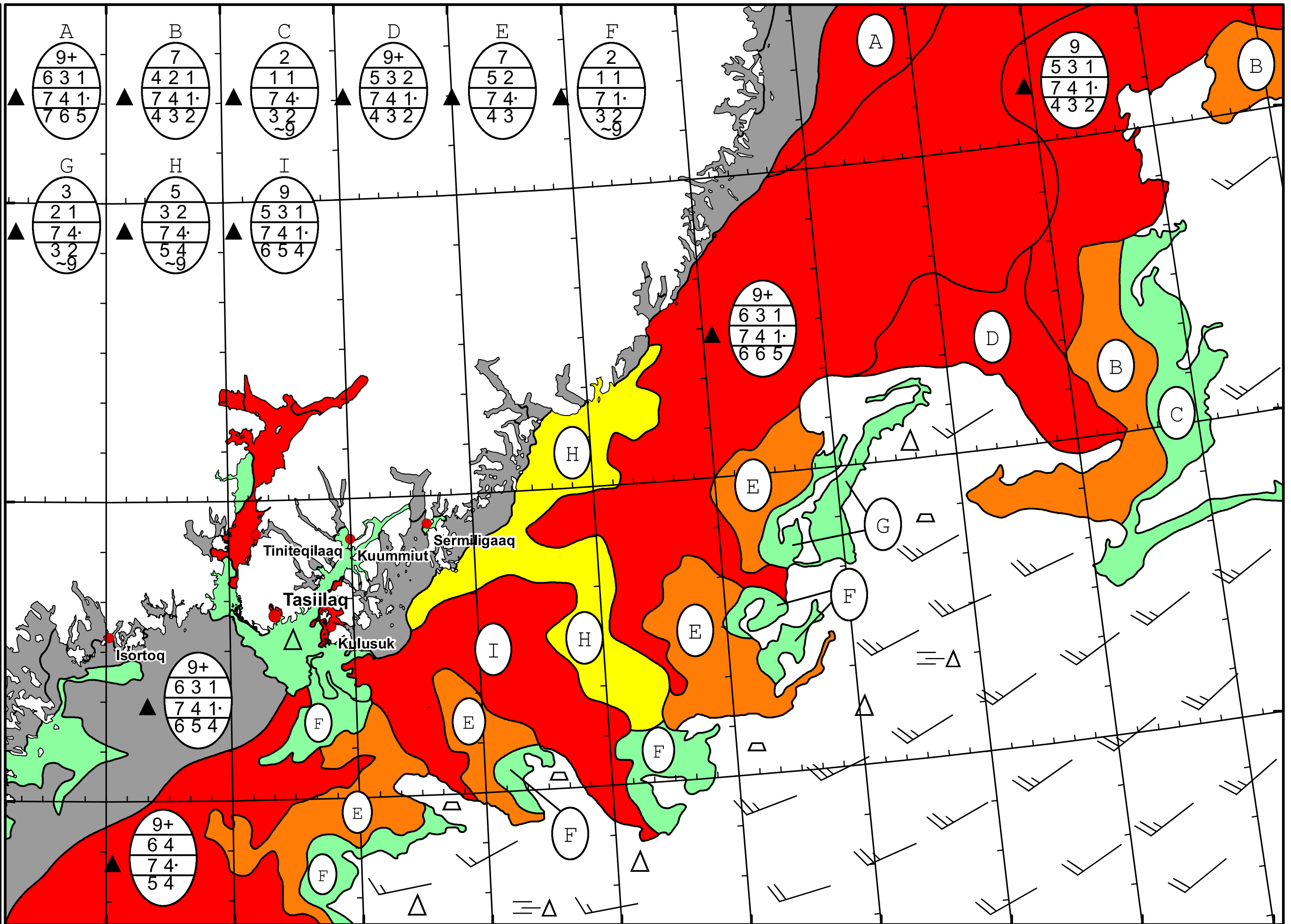


39°W 38°W 37°W 36°W 35°W 34°W 33°W 32°W 31°W 30°W 29°W



DMI
Ice Service
Danish Meteorological Institute

East Greenland Ice Chart

Valid: 31 May 2024, 08:55 UTC



39°W 38°W 37°W 36°W 35°W 34°W 33°W 32°W 31°W 30°W