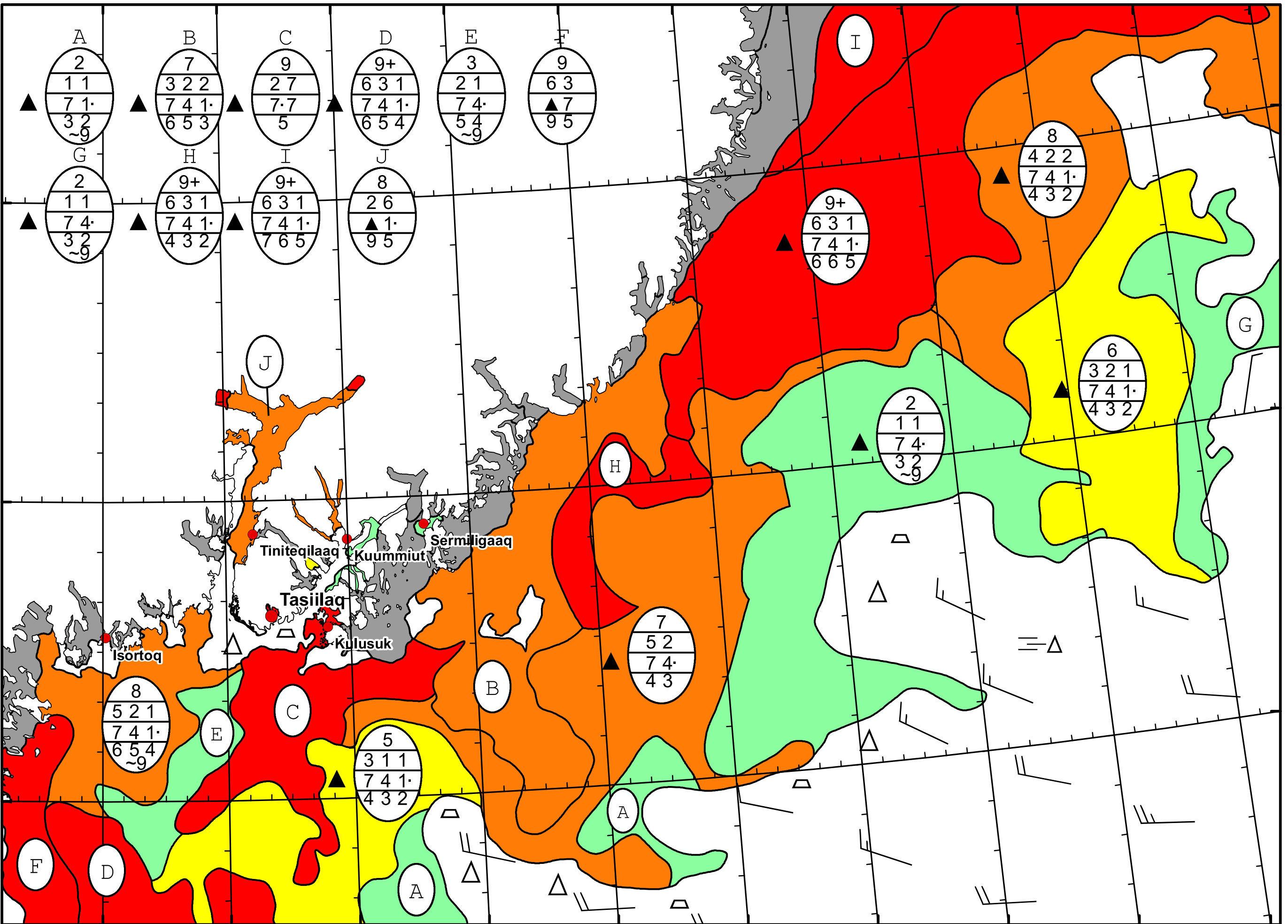


39°W 38°W 37°W 36°W 35°W 34°W 33°W 32°W 31°W 30°W 29°W



67°N

66°N

65°N

39°W 38°W 37°W 36°W 35°W 34°W 33°W 32°W 31°W 30°W

DMI
Ice Service
Danish Meteorological Institute

East Greenland Ice Chart

Valid: 02 June 2024, 09:00 UTC

