

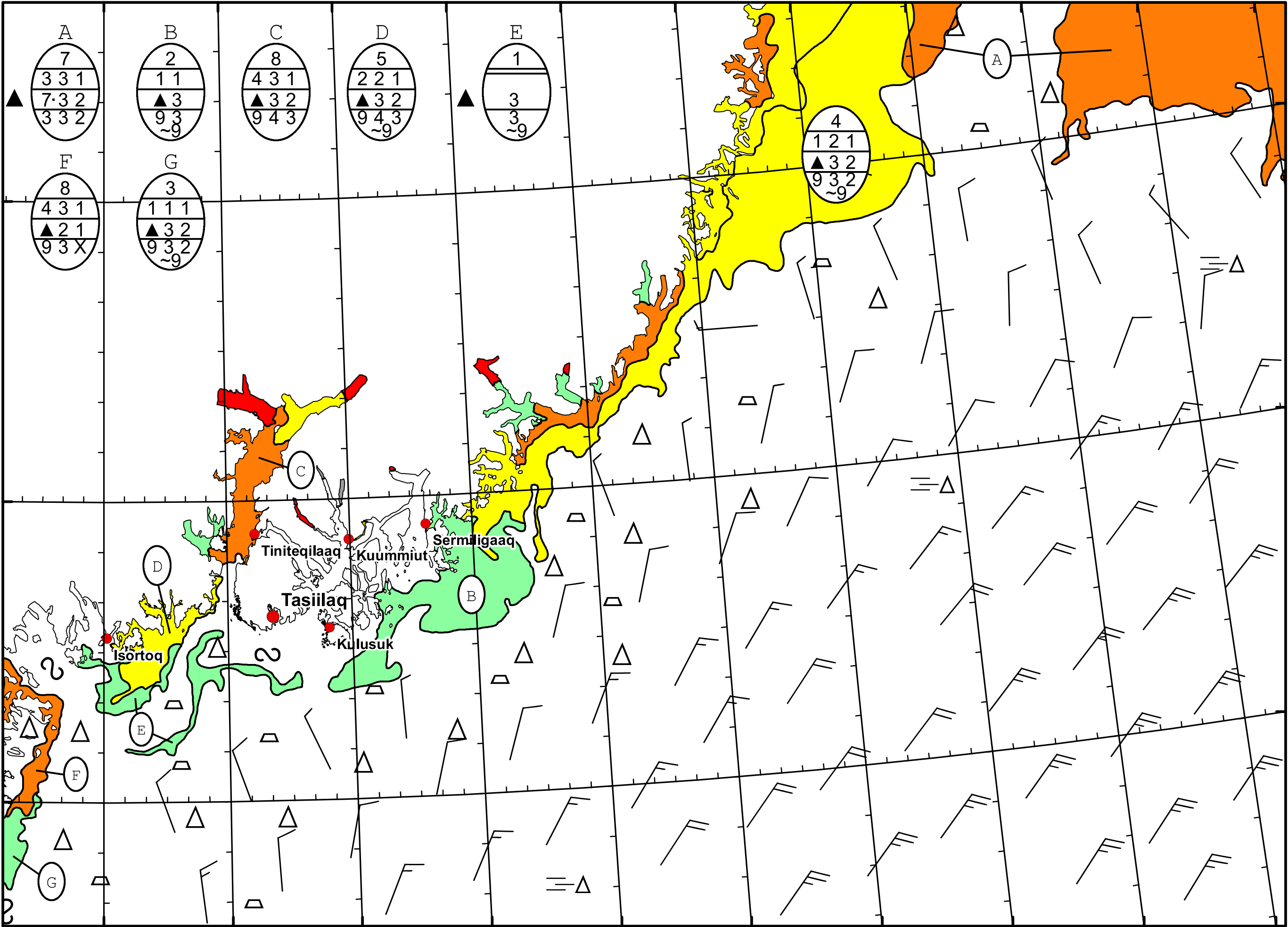
39°W 38°W 37°W 36°W 35°W 34°W 33°W 32°W 31°W 30°W 29°W



DMI  
Ice Service

East Greenland Ice Chart  
Danish Meteorological Institute

Valid: 22 November 2024, 20:05 UTC



39°W 38°W 37°W 36°W 35°W 34°W 33°W 32°W 31°W 30°W

67°N

66°N

65°N