

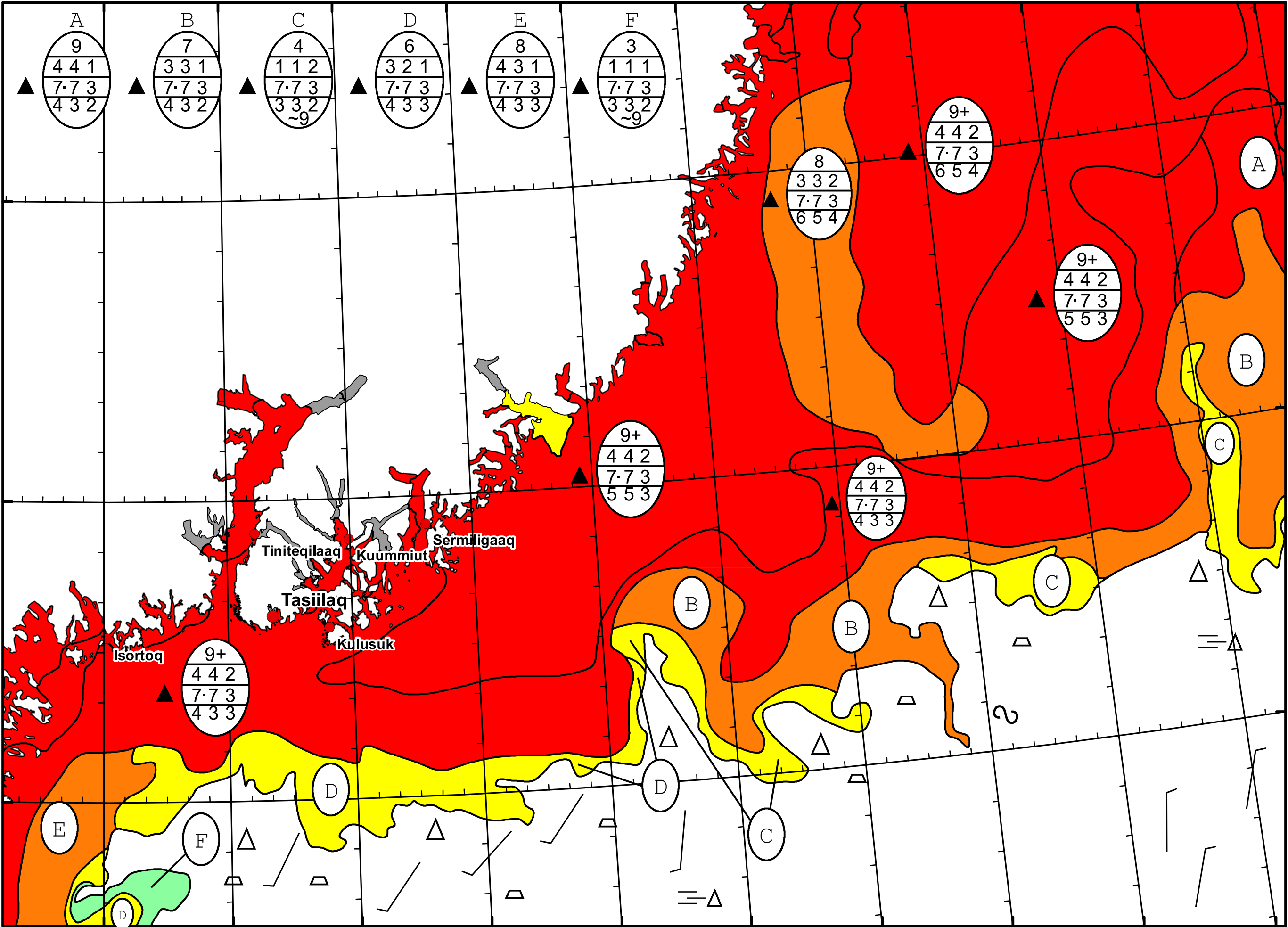
39°W 38°W 37°W 36°W 35°W 34°W 33°W 32°W 31°W 30°W 29°W



DMI
Ice Service

East Greenland Ice Chart
Danish Meteorological Institute

Valid: 04 January 2025, 20:00 UTC



39°W 38°W 37°W 36°W 35°W 34°W 33°W 32°W 31°W 30°W

67°N

66°N

65°N