

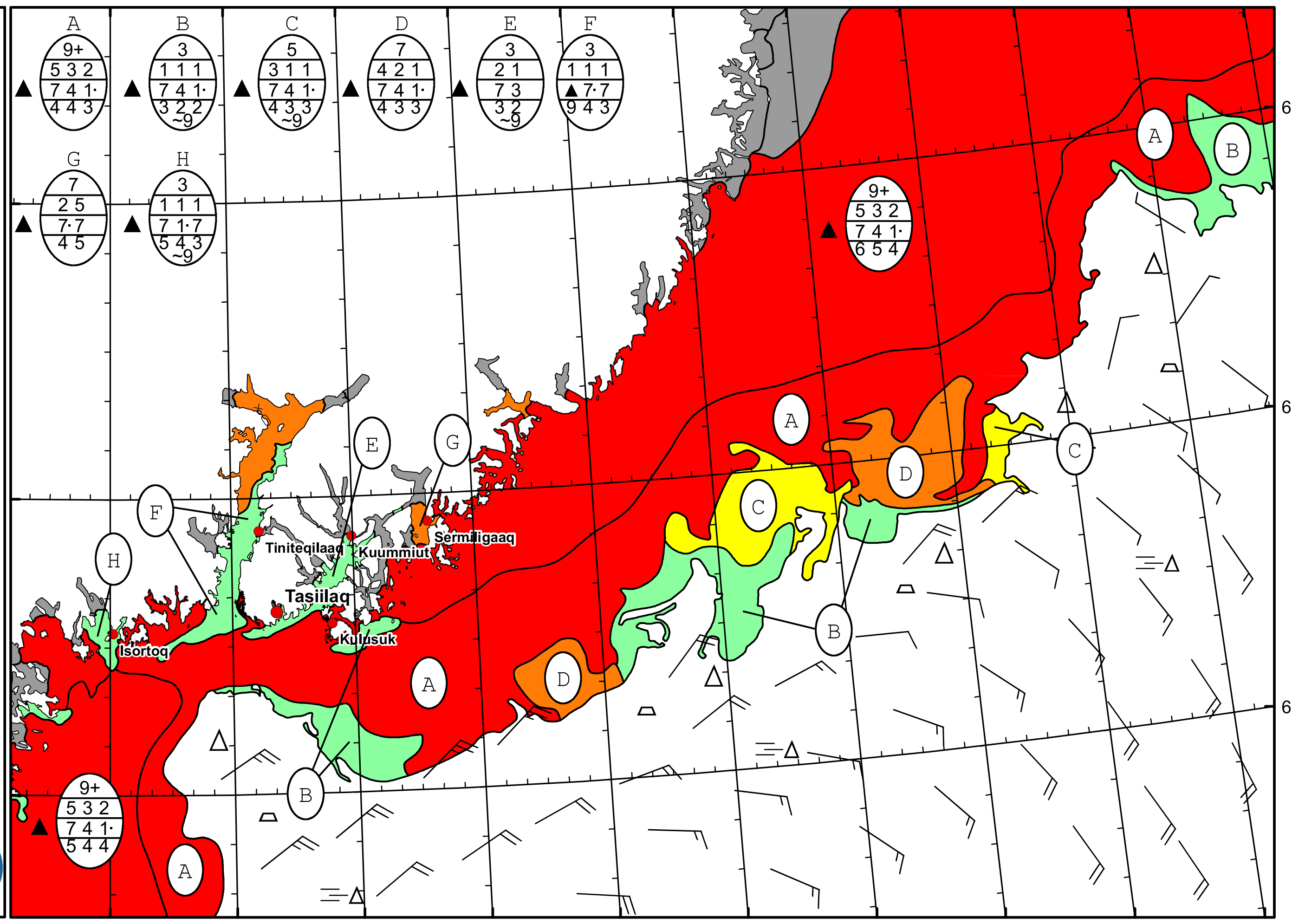
39°W 38°W 37°W 36°W 35°W 34°W 33°W 32°W 31°W 30°W 29°W



DMI  
Ice Service  
Danish Meteorological Institute

East Greenland Ice Chart

Valid: 03 April 2025, 09:05 UTC



39°W 38°W 37°W 36°W 35°W 34°W 33°W 32°W 31°W 30°W

67°N

66°N

65°N

Tiniteqilaq  
Kuummiut  
Sermiligaaq  
Tasiilaq  
Kulusuk  
Isortoq