

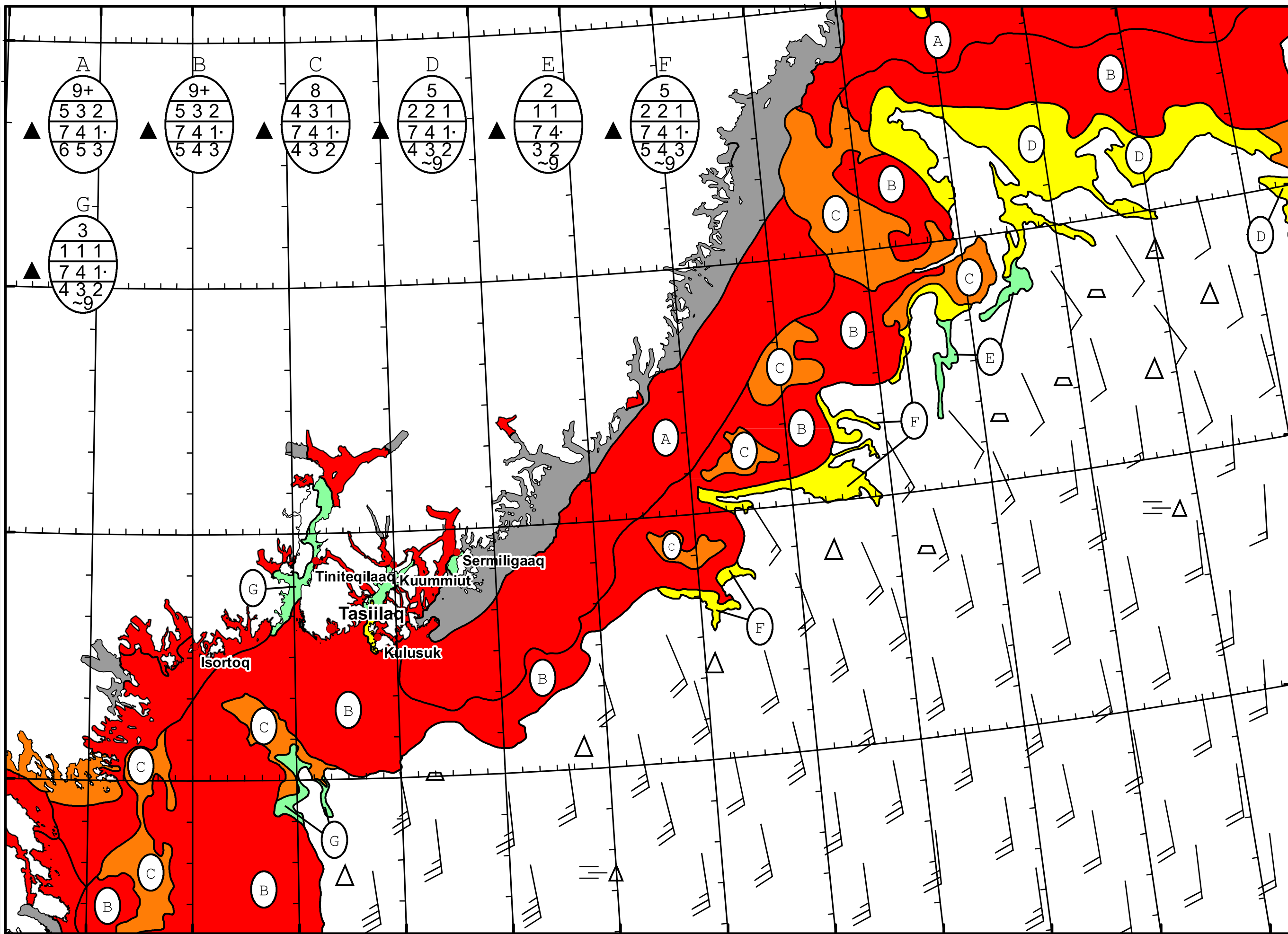
41°W 40°W 39°W 38°W 37°W 36°W 35°W 34°W 33°W 32°W 31°W 30°W 29°W 28°W



DMI  
Ice Service

East Greenland Ice Chart  
Danish Meteorological Institute

Valid: 18 April 2026, 08:30 UTC



67°N

66°N

65°N

40°W 39°W 38°W 37°W 36°W 35°W 34°W 33°W 32°W 31°W 30°W 29°W