

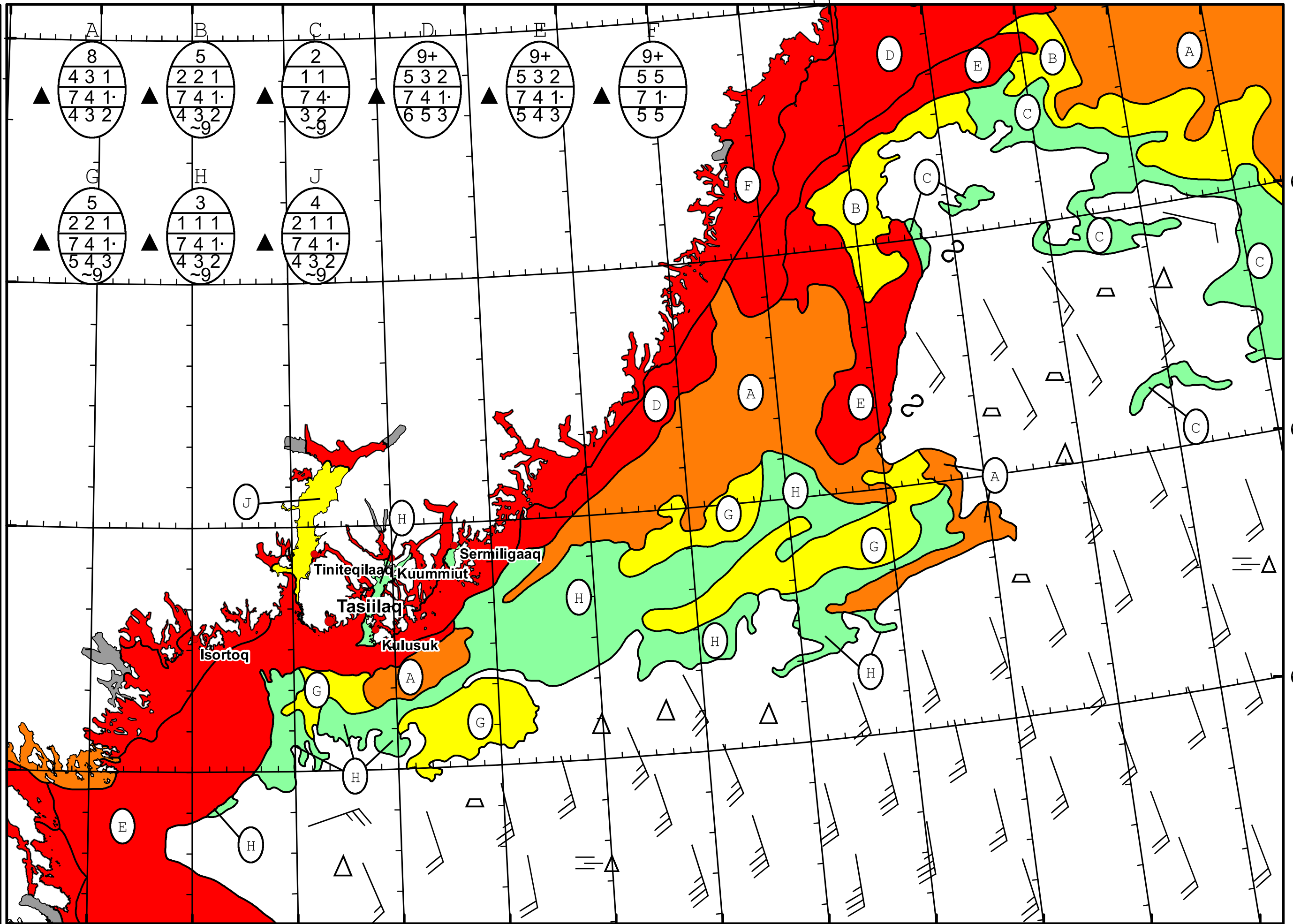
41°W 40°W 39°W 38°W 37°W 36°W 35°W 34°W 33°W 32°W 31°W 30°W 29°W 28°W



DMI
Ice Service

East Greenland Ice Chart
Danish Meteorological Institute

Valid: 27 April 2026, 08:55 UTC



40°W 39°W 38°W 37°W 36°W 35°W 34°W 33°W 32°W 31°W 30°W 29°W

67°N

66°N

65°N