

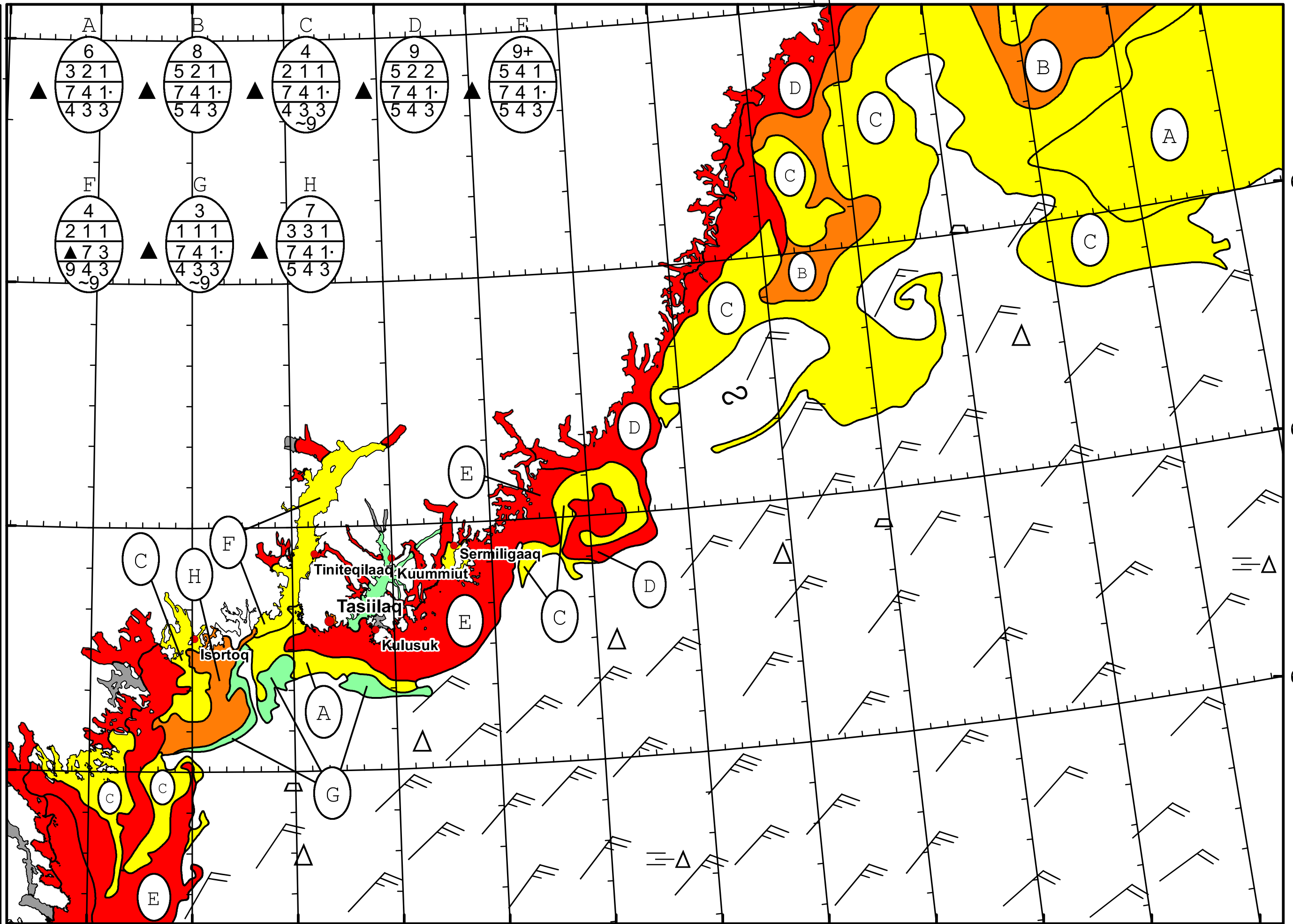
41°W 40°W 39°W 38°W 37°W 36°W 35°W 34°W 33°W 32°W 31°W 30°W 29°W 28°W



DMI
Ice Service

East Greenland Ice Chart
Danish Meteorological Institute

Valid: 22 May 2026, 20:05 UTC



A	B	C	D	E
6	8	4	9	9+
3 2 1	5 2 1	2 1 1	5 2 2	5 4 1
7 4 1	7 4 1	7 4 1	7 4 1	7 4 1
4 3 3	5 4 3	4 3 3	5 4 3	5 4 3

F	G	H
4	3	7
2 1 1	1 1 1	3 3 1
7 3	7 4 1	7 4 1
9 4 3	4 3 3	5 4 3

40°W 39°W 38°W 37°W 36°W 35°W 34°W 33°W 32°W 31°W 30°W 29°W

67°N

66°N

65°N